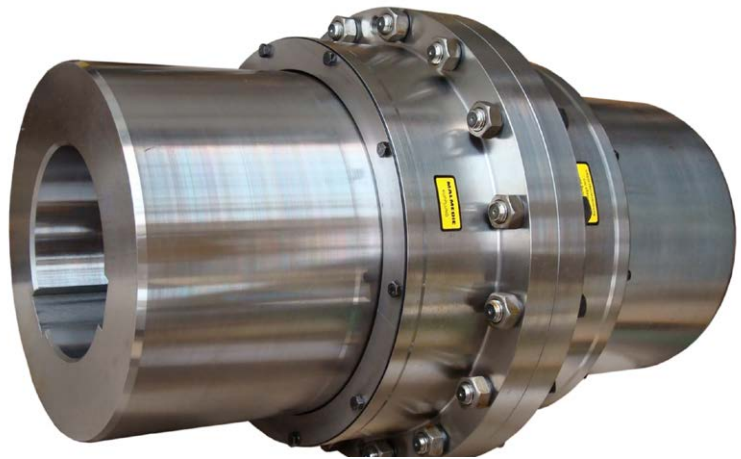


# Product- overview



Couplings  
Coupling systems  
Safety clutches

# SIMPLE SHAFT CONNECTIONS

---

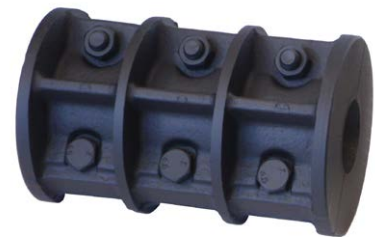
## Rigid coupling

- Made of steel, standard phosphating; stainless steel version available
- Extreme form-fit rigidity
- High torque transmission
- Maintenance and wear-free
- Up to 1,420 Nm torque and 50 mm bore
- Max. speed 5,500 rpm



## Clamp coupling DIN 115

- Made of cast iron or steel
- Absorbs shocks and radial / axial loads
- Vertical or horizontal arrangement
- With keyway according to DIN 6885/1
- Up to 56,000 Nm torque and 200 mm bore
- Max. speed 1,700 rpm



## Flange coupling DIN 116

- Made of cast iron or steel
- Absorbs shocks and radial / axial loads
- Vertical or horizontal arrangement
- With keyway according to DIN 6885/1
- Up to 1,425,000 Nm torque and 500 mm bore
- Max. speed 6,850 rpm



## Chain coupling

- Made of steel, fully machined, standard surface phosphating.
- Shafts do not need to be exactly aligned, small axial play permissible
- Hardened teeth
- Maintenance without hub disassembly
- Up to 8,000 Nm torque and 110 mm bore
- Max. speed 6,000 rpm



# COUPLINGS WITH EQUALISATION FUNCTION

---

## Elastic jaw coupling (backlash free)

- Made of steel or aluminium, fully machined
- Elastomer element available in various degrees of hardness
- Vertical or horizontal arrangement
- Optionally available with extension
- Up to 55,000 Nm torque and 200 mm bore
- Max. speed 6,850 rpm



---

## Polynorm coupling

- Made of grey cast iron
- Compensation of vibrations and drive shocks
- Compensation of shaft misalignments
- Maintenance-free, fail-safe, compact, axially pluggable
- Up to 26,800 Nm torque and 200 mm bore
- Max. speed 5,000 rpm



---

## VEBOFLEX coupling

- Made of grey cast iron or steel
- Compensation of radial, axial and angular shaft misalignments
- High wear resistance, low maintenance
- Torsionally flexible, vibration-damping, puncture-proof
- Up to 1,300,000 Nm torque and 640 mm bore
- Max. speed 5,000 rpm



---

## MEGIFLEX shaft coupling

- Made of fully machined steel
- Suitable for reversing and intermittent operation
- Maintenance and wear-free
- Axially and angularly flexible, puncture-proof
- Up to 3,000 Nm torque and 80 mm bore
- Max. speed 14,000 rpm



---

## Metall bellow coupling

- Made of fully machined aluminium, stainless steel bellows
- Suitable for high operating temperatures (>300°C)
- Maintenance and wear-free
- Optionally available with extension
- Up to 30,000 Nm torque and 45 mm bore
- Max. speed 10,000 rpm



# COUPLINGS WITH EQUALISATION FUNCTION

---

## Gear coupling

- Made of steel, with standard surface phosphating, sleeve made of polyamide
- Statically balanced
- Maintenance and lubrication free
- Vibration damping
- Up to 5,000 Nm torque and 125 mm bore
- Max. Speed 14,000 rpm



---

## Steel lamina coupling

- Made of steel, fully machined
- Blade pack made of stainless steel INOX
- Torsionally stiff, maintenance-free and durable
- Optionally available with double plate pack or extension
- Up to 130,000 Nm torque and 205 mm bore
- Max. speed 14,500 rpm



# CONE CLAMPING ELEMENTS (FRICTIONAL CONNECTION)

## Friction connections

- Mechanical friction connections
- Hydraulic friction connections
- Spli friction connections
- Shaft couplings
- Flange couplings



## Locking assemblies

- Internal clamping sets
- External clamping elements



# FRICTION TORQUE LIMITERS, TORQUE LIMITERS

## Mechanical torque limiters

- Friction torque limiters
- Torque limiters (rollers, balls)
- Torque limiters free rotation
- Axial force limiters

## Pneumatic clutches

- Roller phase pneumatic clutches
- Friction pneumatic clutches
- Unlocking torque limiter



LEARN  
MORE





# COUPLINGS FOR HEAVY INDUSTRY

---

## Gear coupling

- Made from high-quality heat-treated steel
- Compensation of angular, radial and axial deviations
- Suitable for reversing operation
- Smooth running due to tooth head centring
- With visual wear indicator
- Up to 22 million Nm torque and 1,035 mm bore



## Gear joint spindle

- Maximum precision and smooth running
- Individually optimised sealing system to reduce wear
- New planning and retrofitting on existing systems
- Torques > 2 million Nm



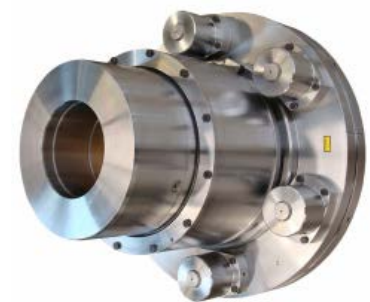
## Drum coupling (rope drum joint)

- Made of steel, fully machined
- Positive-locking power transmission
- High permissible torque with small installation space
- Optionally with automatic wear indicator
- Up to 1,800,000 Nm torque and 625 mm bore



## SE Safety clutch

- High disconnection repeat accuracy
- Quick and easy re-engagement
- High load capacity / robust design
- Optionally with automatic wear indicator
- Variation options for the number / size of the safety elements and the effective diameter



# FLOHR - PRODUCTS OVERVIEW

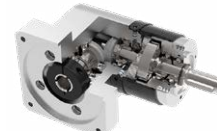
## Gears

- Spiral toothed bevel gears
- Bevel gears
- Worm gears
- Spur gears
- Special gears



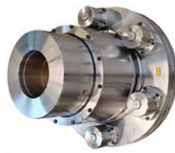
## Gear Technology

- Bevel gearboxes
- Angle-planetary gearboxes
- Worm gearboxes
- Cam drives and indexing units
- Cam components
- Special gearboxes



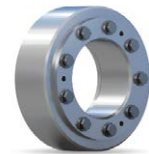
## Couplings

- Rigid and flexible couplings
- Frictional connections
- Drum-coupling
- Gear-couplings
- Safety couplings



## Friction connections

- Shrink discs
- Shaft couplings
- Flange couplings
- Locking units



## Clamping technology

- Manual and pneumatic clamping solutions
- Power clamps
- Pivot units
- End effector solutions
- Linear units
- Grippers



## Belt drives

- V-belt and flat belt pulleys
- Flywheels
- Special pulleys
- Motor clamping systems
- Drive belts
- Customer designed castings
- Accessories



## Sensor systems

- Incremental encoders
- Magnetic encoders
- Absolute encoders
- Electronic overspeed switches
- Electronic position switches
- Universal encoder systems
- Systems



## Contract manufacturing

- Turning, milling, grinding
- Grooving and broaching
- Balancing
- Calculation and design
- Assembly
- Service and repair



  
INDUSTRIE TECHNIK GMBH

### FLOHR Germany

FLOHR INDUSTRIE TECHNIK GmbH  
Im Unteren Tal 1  
D-79761 Waldshut-Tiengen  
Phone: +49 (0) 77 51 / 87 31 0  
info@flohr-industrietechnik.de  
www.flohr-industrietechnik.de

### FLOHR Switzerland

FLOHR INDUSTRIE TECHNIK GmbH  
Zilistude 164  
CH-5465 Mellikon  
Phone: +41 (0) 56 / 267 08 10  
info@flohr.ch  
www.flohr.ch

### FLOHR Austria

FLOHR INDUSTRIE TECHNIK  
Bucherstraße 37b  
A-6922 Wolfurt  
Phone: +43 (0) 5572 / 372 158  
info@flohr.at  
www.flohr.at