



**ComInTec®**

**FLOHR**  
INDUSTRIETECHNIK GMBH

# CHAIN COUPLING

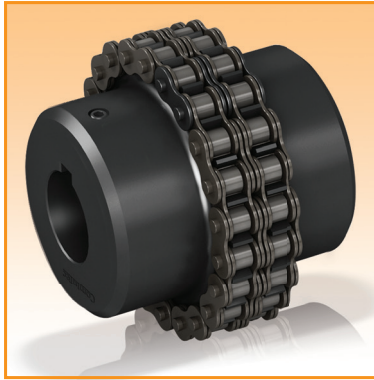
up to 8,000 Nm and 110 mm bore diameters



- Download catalog
- Download instruction sheets

**GC**

# GC - chain coupling: technical data



- ⦿ Made in steel fully turned with standard treatment of phosphating.
- ⦿ Negligible power loss, absorbed by the coupling.
- ⦿ Simple manufacturing.
- ⦿ Hardening of hub teeth.
- ⦿ Optimum quality / price ratio.
- ⦿ Maintenance without moving the hubs axially.

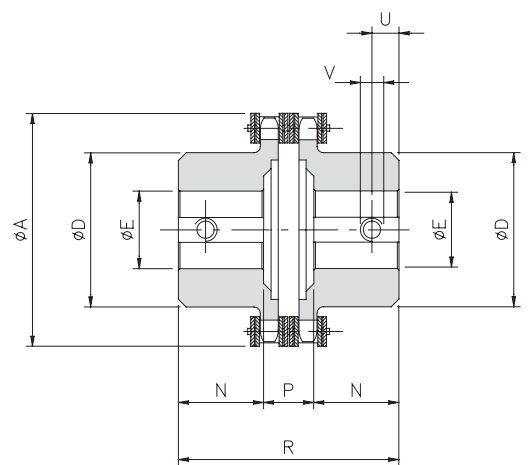
**ON REQUEST**

- ⦿ Various hub connection type available on the hubs.
- ⦿ Specific surface treatments.
- ⦿ Customised versions for specific needs.
- ⦿ Connection to the Torque limiter's (safety coupling) range possible.

The chain coupling GC consists of two steel sprockets, machined and connected by a double chain. The manufacture of the coupling completely in steel allows to use at high temperatures and reduce the loss of power between the driving and driven.

## DIMENSIONS

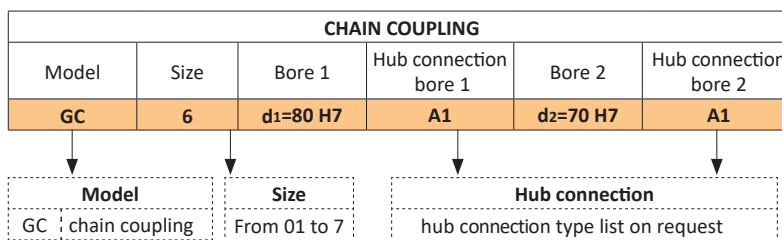
Size	A	D	E H7		N	P	R	U	V
			pilot	max					
01	45	25	8	12	9	13	31	4	M3
00	57	37	10	20	20	21	61	5	M3
0	75	50	12	28	19	23	61	8	M4
1	101	70	16	38	29	29	87	12	M6
2	126	89	20	55	38	32	108	12	M6
3	159	110	20	70	56	24,5	142,5	15	M8
4	183	130	28	80	59	37	155	15	M8
5	216	130	30	80	88	40	216	15	M8
6	291	150	40	90	103	46	252	25	M10
7	310	170	50	110	124	47	295	25	M10



## TECHNICAL CHARACTERISTICS

Size	Max torque [Nm]	Pitch (double chain) ISO-R 606	Weight [Kg]	Inertia [kgm²]	Max speed [Rpm]	Misalignments		
						Angular α [°]	Axial X [mm]	Radial K [mm]
01	140	3/8" x 7/32" z12	0,2	0,00002	6000	2°	1,50	0,20
00	190	3/8" x 7/32" z16	0,6	0,00009	5000		1,50	0,20
0	600	3/8" x 7/32" z22	1,0	0,00030	3800		1,50	0,20
1	700	1/2" x 5/16" z22	2,7	0,00148	2800		2,40	0,25
2	1400	3/4" x 7/16" z18	5,4	0,00497	2200		3,20	0,30
3	2500	1" x 17,02 z17	11,8	0,01817	1800		4,50	0,35
4	3200	1" x 17,02 z20	16,9	0,03530	1500		4,80	0,40
5	4000	1" x 17,02 z24	19,5	0,05333	1300		4,80	0,40
6	7000	1" 1/4 x 3/4" z26	42,5	0,19027	1000		6,30	0,50
7	8000	1" 1/4 x 3/4" z28	58,6	0,28643	900		6,30	0,50

## ORDER EXAMPLE



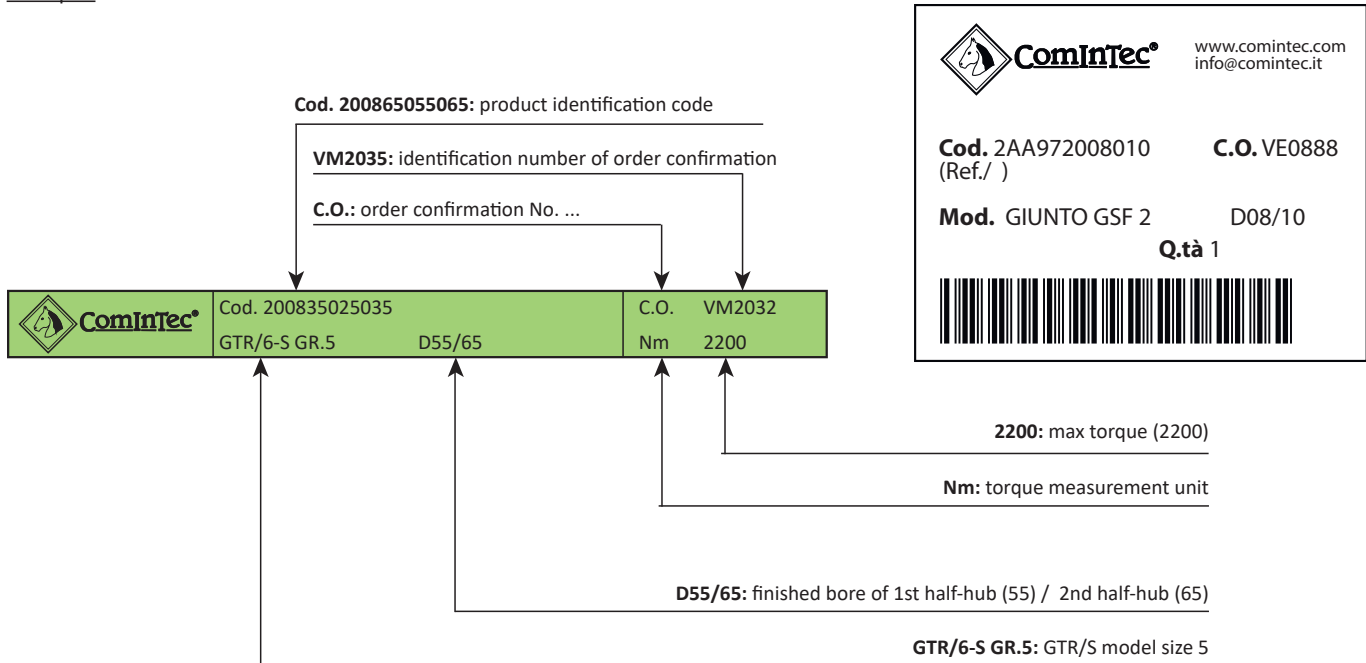
## NOTES

- The weights refer to the coupling with minimum bore.
- Inertias refer to the coupling with maximum bore.

## LABEL

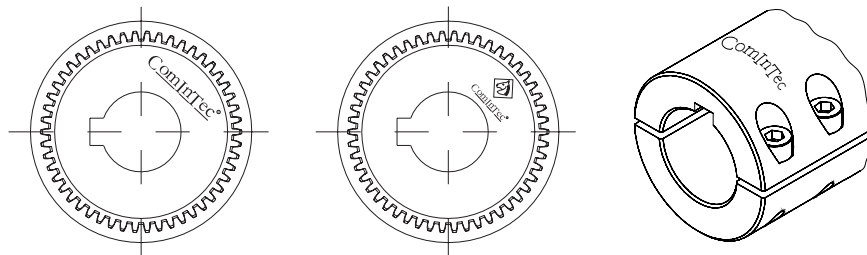
At ComInTec, as an element identifier for each group, we apply a sticker which shows all relevant information required for the traceability of the group and of the same production batch. This is necessary and indispensable to simplify the information needs of spare parts or the reordering of the same group. For some products, a plasticized green sticker is used with indelible ink, applied directly to the group. For other models it is a white adhesive label with thermal transfer ink applied on the packaging of the group.

Example:



Example:

## MARKING



## ComInTec® CERTIFICATION



- Certified company since february 1996 according to **UNI EN ISO 9001:2015**



- Internal and external environment protection complying with **directive 2011/95/CE (RoHS) and directive attached UE 2015/863**, that forbids the use of harmful substances during the production progress or in the end product.



- Company and production completely **"Made in Italy"**.



- Maximum attention to market requests for **directive with 2014/34/UE (ATEX)** for use in potentially explosive environments.



- **ABS certification** to use in the naval sector.



- **European Power Transmission Distributors Association (EPTDA)**. The largest organisation of distributors and manufacturers of power transmission and motion control products in Europe.



- Continuous product research and development, some of them with **Italian and European patent**.



- **REACH (CE) conformity No.1970/2006**.

# FLOHR - PRODUCTS OVERVIEW

## Gears

- Spiral toothed bevel gears
- Bevel gears
- Worm gears
- Spur gears
- Special gears



## Gear Technology

- Bevel gearboxes
- Angle-planetary gearboxes
- Worm gearboxes
- Cam drives and indexing units
- Cam components
- Special gearboxes



## Couplings

- Rigid and flexible couplings
- Frictional connections
- Drum-coupling
- Gear-couplings
- Safety couplings



## Friction connections

- Shrink discs
- Shaft couplings
- Flange couplings
- Locking units



## Clamping technology

- Manual and pneumatic clamping solutions
- Power clamps
- Pivot units
- End effector solutions
- Linear units
- Grippers



## Belt drives

- V-belt and flat belt pulleys
- Flywheels
- Special pulleys
- Motor clamping systems
- Drive belts
- Customer designed castings
- Accessories



## Sensor systems

- Incremental encoders
- Magnetic encoders
- Absolute encoders
- Electronic overspeed switches
- Electronic position switches
- Universal encoder systems
- Systems



## Contract manufacturing

- Turning, milling, grinding
- Grooving and broaching
- Balancing
- Calculation and design
- Assembly
- Service and repair



**FLOHR**  
INDUSTRIETECHNIK GMBH

### FLOHR Germany

FLOHR INDUSTRIETECHNIK GmbH  
Im Unteren Tal 1  
D-79761 Waldshut-Tiengen  
Phone: +49 (0) 77 51 / 87 31 0  
info@flohr-industrietechnik.de  
www.flohr-industrietechnik.de

### FLOHR Switzerland

FLOHR INDUSTRIETECHNIK  
Zilistude 164  
CH-5465 Mellikon  
Phone: +41 (0) 56 / 267 08 10  
info@flohr.ch  
www.flohr.ch

### FLOHR Austria

FLOHR INDUSTRIETECHNIK  
Bucherstraße 37b  
A-6922 Wolfurt  
Phone: +43 (0) 5572 / 372 158  
info@flohr.at  
www.flohr.at