

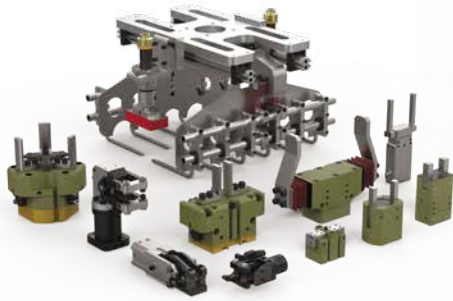
# Visual Selection Guide

## Sheet Metal Grippers



# ABOUT DESTACO

Built on a Strong Foundation



Gripping Solutions



Linear Positioning Solutions



Rotary Positioning Solutions



Clamping Solutions



CRL Remote Handling Solutions



Robotic Tooling Solutions

DESTACO, a Dover company, is a global leader in the design and manufacture of high-performance automation, workholding and remote-handling solutions. The company serves customers in a variety of end-markets, including the automotive, life sciences, consumer packaged goods, aerospace, industrial and nuclear sectors.

Built on a legacy of more than 100 years, DESTACO offers a comprehensive portfolio of products designed to engineer precise movement, placement and control solutions that drive productivity and uptime for manufacturers around the world. The DESTACO family of products consists of industry-leading brands such as DESTACO Manual Clamps, Power Clamps, and End Effectors; CAMCO™ and Ferguson™ Indexers; Robohand™ Grippers; and CRL™ Manipulators and Transfer Ports.

DESTACO is based in Auburn Hills, Michigan, U.S.A. The company has more than 800 employees with 13 locations, in 9 countries, across the Americas, Europe and Asia.

DESTACO is part of Dover Corporation, a diversified global manufacturer with annual revenues of \$7 billion. The company delivers innovative equipment and components, specialty systems and support services through four major operating segments: Energy, Engineered Systems, Fluids, and Refrigeration & Food Equipment. Headquartered in Downers Grove, IL, (NYSE: DOV)

More information is available at [destaco.com](http://destaco.com) and [dovercorporation.com](http://dovercorporation.com)

## Focusing all of our Resources

### New Product Development

DESTACO has dedicated resources to design and build the next generation of products and solutions

### Customer and Technical Service

DESTACO has industry leading global support to address any product and application concerns you may have

### Design Tools

DESTACO provides an extensive CAD library, sizing software, and online tools to support our global customers



## Our Insight Working for You

### Application Engineering

We utilize our expertise and complete portfolio of products to create solution that fit our customers' needs and applications

### Custom Solutions

If our off-the-shelf solutions don't fit, we will partner with our customers to develop products that will

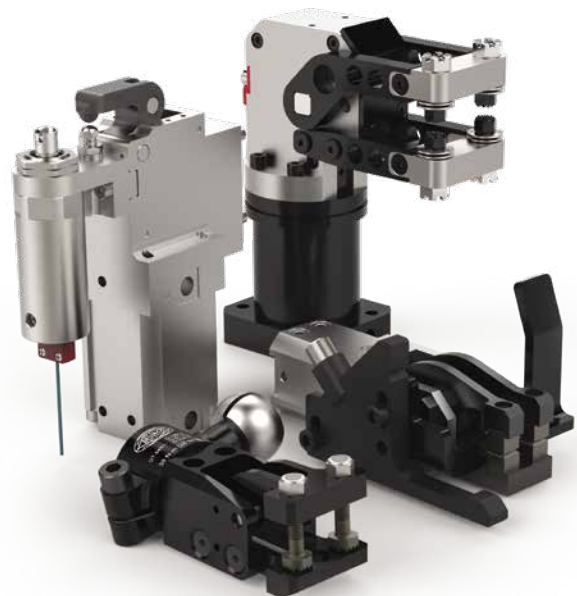


---

## Sheet Metal Gripping Solutions

### Toggle-Lock and Cam-Actuated Grippers

- Press shop and sheet metal transfer application solutions
- Increase productivity with lightweight, high speed Accelerate® grippers
- Wide variety of mounting, jaw and tip configurations offered
- High clamping force and fast opening and closing action
- Long term reliability with minimal maintenance



# SHEET METAL GRIPPERS

## Product Features and Benefits

CLICK OR SCAN

To view the full  
PDF catalog on  
these products



**ACCELERATE**  
COLLECTION

### 84N Accelerate® Press Shop Grippers

- 3 compact, lightweight styles
- Fixed tip and adjustable tip models
- Straight, chisel and 90° jaw options
- 30°, 45°, 60° and 75° jaw openings (84N1/N2)
- 15° to 75° field adjustable jaw openings (84N5)
- Flexible mounting options
- Zero protrusion fixed lower jaw



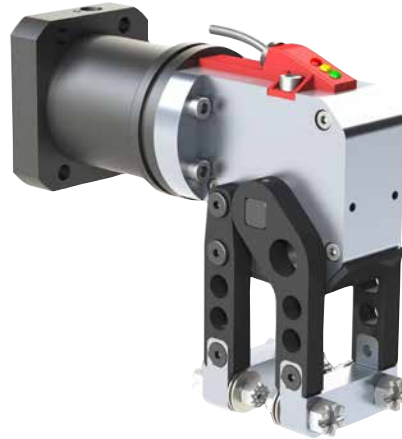
### 84A and 84L Cam-Actuated Grippers

- 5 styles with multiple jaw opening, points, and mounting options
- High speed material movement in restricted spaces
- Fixed and moveable lower jaw styles available
- Roller and cam principal, self-locking at end stop position



### GR84 Enclosed Modular Mini-Clamp Toggle-Lock Gripper

- Offered with several different jaw and tip options
- Can be flange or cylinder mounted
- Easy field-adjustable jaw opening
- Toggle locking mechanism holds the part if air pressure is lost
- Enclosed design protects from contaminants



### GR1 Modular Toggle-Lock Grippers

- 2 cylinder sizes, 15 and 20 Series
- Can be flange or cylinder mounted
- Offered with several different jaw opening and point options
- Toggle locking mechanism holds the part if air pressure is lost





**CLICK OR SCAN**

To view full catalog pages on this product

# SHEET METAL GRIPPERS

## Sizing and Application Chart

Series	Page SG-XXX-#	Clamping Force @ 5bar [72psi] N [lbf]		Opening Angles													Lower																		
		Less than 100 [22]	100 to 250 [22.5 to 56]	250 to 500 [56 to 112]	500 to 750 [112 to 169]	750 to 1000 [169 to 225]	1000 to 1600 [225 to 360]	1600 to 2000 [360 to 360]	30°	45°	60°	62°	68°	72°	75°	76°	80°	90°	180°	15°-75° (User Adjustable)	15° (Limited Jaw Movement)	Cam-Actuated Mechanism	Toggle-Locking Mechanism	Fixed Lower Jaw	Moveable Lower Jaw	Symmetrical Jaw Movement	Chisel Jaw	90°/Right Angle Jaw	Double Tips Jaw Option	Single Tips Jaw Option	Right or Left Jaw Available	Adjustable Tips	High Temperature		
84N1	PRG-1	●	●					●	●	●					●						✓	✓			✓	✓	✓	✓	✓	✓	✓				
84N2	PRG-9	●	●					●	●	●					●						✓	✓			✓	✓	✓	✓	✓	✓	✓				
84N5	PRG-17														●				●		✓	✓	✓	✓	✓	✓	✓	✓	✓	✓	✓	✓			
84A2*	CTG-1		●	●				●	●					●						●	✓	✓	✓	✓	✓	✓	✓	✓	✓	✓	✓	✓	✓	✓	
84A3-3	CTG-25			●	●			●	●	●										●	✓	✓	✓	✓	✓	✓	✓	✓	✓	✓	✓	✓	✓	✓	
84A5-1	CTG-45					●	●	●	●											●	✓	✓	✓	✓	✓		✓					✓	✓	✓	
84L2-1	CTG-51	●									●										✓	✓				✓	✓	✓	✓	✓	✓	✓	✓	✓	
84L3-2	CTG-57	●										●									✓	✓				✓	✓	✓	✓	✓	✓	✓	✓	✓	
GR84-15	TGL-1		●	●				●		●												✓	✓			✓	✓	✓	✓	✓	✓	✓	✓	✓	
GR1-15	TGL-17		●	●					●													✓	✓	✓	✓	✓	✓	✓	✓	✓	✓	✓	✓	✓	✓
GR1-20	TGL-39		●																			✓	✓	✓	✓		✓					✓	✓	✓	

\*Clamping Force @ 6 bar [87 psi]

# 84N1 SERIES

## Sheet Metal Grippers | Ordering Information

CLICK OR SCAN

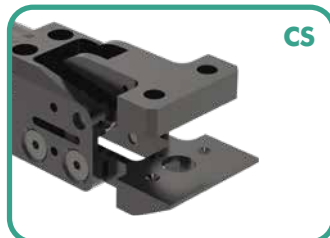
To view full catalog pages on this product



Ports	Description
N	1/8 NPT
G	1/8 BSPP

Opening Angle	Description
030	30° Opening Angle
045	45° Opening Angle
060	60° Opening Angle
075	75° Opening Angle

Jaw Style/ Tip Mount	Description
FA	Fixed Lower 0° Jaw, Single Tip Mount
FC	Fixed Lower 0° Jaw, Double Tip Mount
CA	Fixed Lower Chisel Jaw, Single Tip Mount
CC	Fixed Lower Chisel Jaw, Double Tip Mount
CS	Fixed Lower Chisel Jaw, Double Tip w/Sensor Mount
PC	Fixed Lower 90° Jaw, Double Tip Mount



### Specifications:

See page SG-PRG-15 for technical specifications.

### Mounting options are ordered separately:

Please refer to mounting options on pages SG-PRG-13 for mounting style and part number.



**CLICK OR SCAN**

To view full catalog pages on this product

# 84N1 SERIES

## Sheet Metal Grippers | Ordering Information

### Part Presence Detection

0  
P  
N

#### Description

None  
PNP  
NPN



4mm Sensing Range

### Sheet Stops

0  
1

#### Description

None  
Included



### Left Sensor Side Mount

- | Description                                             |
|---------------------------------------------------------|
| 0 None                                                  |
| 1 Dual Magneto-resistive PNP Sensors Left Side          |
| 2 Dual Magneto-resistive NPN Sensors Left Side          |
| 3 Infrared PNP Sensing (not available for PC jaw style) |

### Right Sensor Side Mount

- | Description                                             |
|---------------------------------------------------------|
| 0 None                                                  |
| 1 Dual Magneto-resistive PNP Sensors Right Side         |
| 2 Dual Magneto-resistive NPN Sensors Right Side         |
| 3 Infrared PNP Sensing (not available for PC jaw style) |

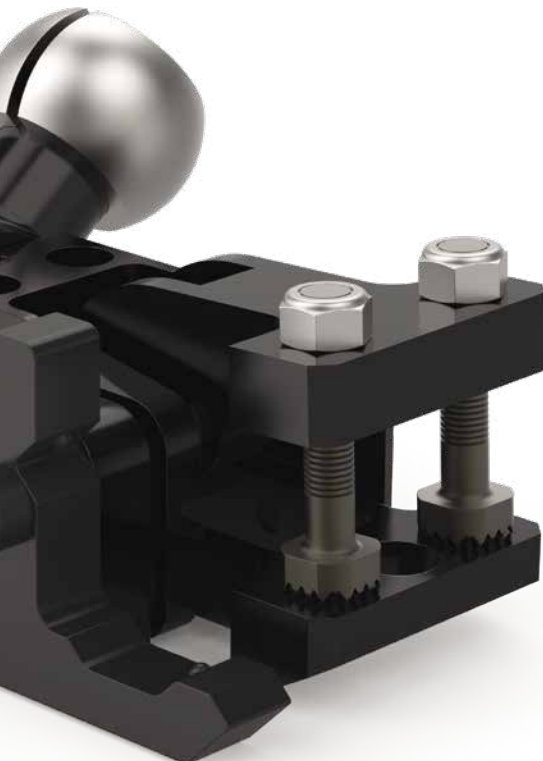
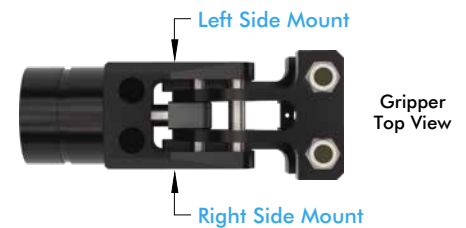


0.4 mm Double blank minimum per sheet thickness

### Tips

#### Description

- |    |                                             |
|----|---------------------------------------------|
| 00 | None                                        |
| 01 | Serrated Tip (for all Jaw Styles except FA) |
| 02 | Serrated Tip (for FA Jaw Style only)        |
| 03 | Point Tip                                   |
| 04 | Peen Tip                                    |
| 05 | Polyurethane Tip (Durometer 70A)            |



Description	Part Number	Single Tip Jaw	Double Tip Jaw
Polyurethane Tip	8JD-1005-1	Yes	Yes
Point Tip	8JD-1001-1	Yes*	Yes
Serrated Tip	8JD-1002-1	Yes*	Yes
Peen Tip	8JD-1003-1	Yes*	Yes
Serrated Notched Top (for Jaw Style FA only)	8JD-1004-1	Yes	No

\*These options will work on single tip jaws but WILL activate the part present sensor which will result in a false positive if that option is used.

Customer is responsible for final adjustments and tightening of all accessory mounting screws.

# 84N2 SERIES

## Sheet Metal Grippers | Ordering Information

CLICK OR SCAN

To view full catalog pages on this product

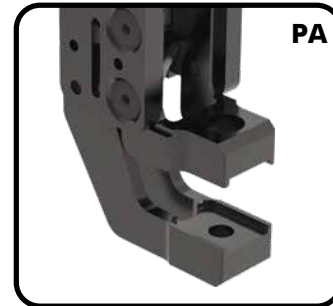


84N2 - N - 030 - FA - 2CS3 - 1 - 0 - 1 - 0

Ports	Description
N	1/8 NPT
G	1/8 BSPP

Opening Angle	Description
030	30° Opening Angle
045	45° Opening Angle
060	60° Opening Angle
075	75° Opening Angle

Jaw Type and Style	Description
FA	Straight Fixed Lower Jaw
PA	90° Jaw Configuration



### Specifications:

See page SG-PRG-15 for technical specifications.

### Mounting options are ordered separately:

Please refer to mounting options on pages SG-PRG-13 for mounting style and part number.







**CLICK OR SCAN**

To view full catalog pages on this product

# 84N2 SERIES

## Sheet Metal Grippers | Ordering Information

### In-Jaw Blank Sensing\*

Description	
None	0
PNP	P
NPN	N

\*In-jaw blank sensing not available with Single Cone Style Tip.



### Sheet Stop

Description	
None	0
Sheet Stop	1



### Jaw Tip Insert Options

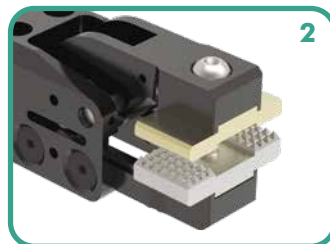
0000 None

- or -

### Step 1 - Tip Type Choose One

2 C S 3

- 1 Single Tip
- 2 Double Tip



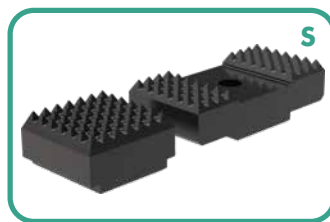
### Step 2 - Upper Jaw Tip Insert Choose One (see images below)

2 C S 3

- C Cone Style (not compatible with In-Jaw Part Sensing option)
- S Serrated Style



Single or Double Cone Tip (not available for lower jaw)



Single or Double Serrated Tip

### Step 3 - Lower Jaw Tip Insert Serrated Only

2 C S 3

- S Serrated Style Only (Cone-to-Cone option not available)

Customer is responsible for final adjustments and tightening of all accessory mounting screws.

### Left Sensor Side Mount\*

Description	
None	0
Dual Magneto-resistive PNP Sensors Left Side	1
Dual Magneto-resistive NPN Sensors Left Side	2
Infrared PNP Sensing (not available for PA jaw style)	3

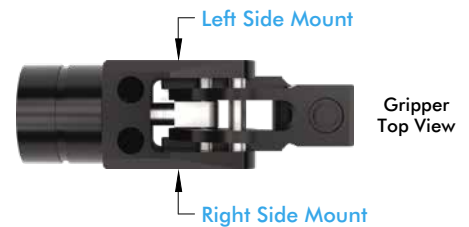
### Right Sensor Side Mount\*

Description	
None	0
Dual Magneto-resistive PNP Sensors Right Side	1
Dual Magneto-resistive NPN Sensors Right Side	2
Infrared PNP Sensing (not available for PA jaw style)	3

\*Use of a Sheet Stop is highly recommended when using 2-Point Sensing.



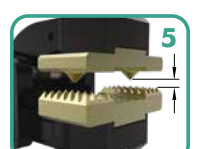
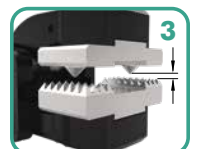
Side mount sensing detects gripper jaw position and can be adjusted at any point along the jaw travel. The sensors can be adjusted to sense blank, double, full open, and full closed based on jaw position. Use the in-jaw option to verify material between the jaws.



### Step 4 - Part Thickness Range Choose One

2 C S 3

1	0.4 to 1.0 mm	Black-Black
2	1.0 to 1.6 mm	Silver-Black
3	1.6 to 2.2 mm	Silver-Silver
4	2.2 to 2.8 mm	Gold-Silver
5	2.8 to 3.4 mm	Gold-Gold



# 84N5 SERIES

Accelerate® Press Shop Sheet Metal Grippers | Ordering Information

CLICK OR SCAN

To view full catalog pages on this product



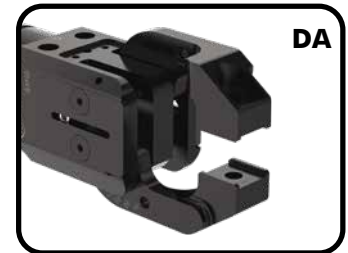
84N5 - G - ADJ - DA - 2CS4 - 1 - P - 0 1

Ports	Description
N	1/8 NPT
G	1/8 BSPP

Opening Angle	Description
075	75° Opening Angle
ADJ	15° to 75° Adjustable Opening Angle



Jaw Type and Style	Description
FA	Straight Fixed Lower Jaw
DA	Straight Double Open Jaws
PA	90° Jaw Configuration



### Specifications:

See page 15 for technical specifications.

### Mounting options are ordered separately:

Please refer to mounting options on page SG-PRG-13 for mounting style and part numbers.



US Patent # 10549431



**CLICK OR SCAN**

To view full catalog pages on this product

# 84N5 SERIES

## Accelerate® Press Shop Sheet Metal Grippers | Ordering Information

### In-Jaw Blank Sensing\*

Description
0 None
P PNP
N NPN

\*In-jaw blank sensing not available with Single Cone Style Tip.



### Sheet Stop

Description
0 No Sheet Stop (PA option only)
1 Sheet Stop required (FA, DA options)



### Jaw Tip Insert Options

0000 None

- or -

### Step 1 - Tip Type Choose One

**2 C S 3**

- 1 Single Tip
- 2 Double Tip



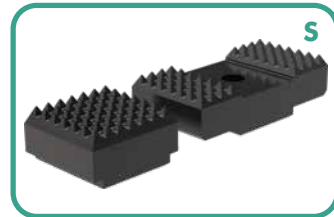
### Step 2 - Upper Jaw Tip Insert Choose One (see images below)

**2 C S 3**

- C Cone Style (Single Cone [1Cxx] not compatible with In-Jaw Sensor)
- S Serrated Style



Single or Double Cone Tip (not available for lower jaw)



Single or Double Serrated Tip

### Step 3 - Lower Jaw Tip Insert Serrated Only

**2 C S 3**

- S Serrated Style Only (Cone-to-Cone option not available)

### Left Side 2-Point Sensing

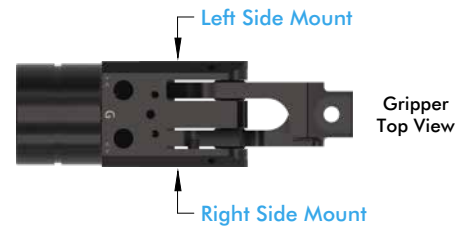
Description
0 None
1 Dual Magneto-Resistive PNP Sensors Left Side
2 Dual Magneto-Resistive NPN Sensors Left Side

### Right Side 2-Point Sensing

Description
0 None
1 Dual Magneto-Resistive PNP Sensors Right Side
2 Dual Magneto-Resistive NPN Sensors Right Side



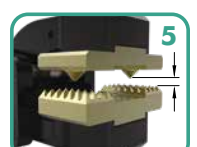
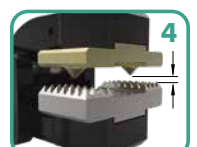
Side mount sensing detects gripper jaw position and can be adjusted at any point along the jaw travel. The sensors can be adjusted to sense blank, double, full open, and full closed. Use the in-jaw option to verify material between the jaws.



### Step 4 - Part Thickness Range Choose One

**2 C S 4**

- 1 0.4 to 1.0 mm Black-Black
- 2 1.0 to 1.6 mm Silver-Black
- 3 1.6 to 2.2 mm Silver-Silver
- 4 2.2 to 2.8 mm Gold-Silver
- 5 2.8 to 3.4 mm Gold-Gold



# 84N TIPS & BLOCKS

## Sheet Metal Grippers | Replacement Parts

Catalog Pages For Accessories Are Included Within The Product Series Link.

### 84N1 Single Tips



Point Tip

Part #

**8JD-1001-1**



Peen Tip

Part #

**8JD-1003-1**



Serrated for double tip jaw style

Part #

**8JD-1002-1**



Serrated for use with part present sensor single tip jaw style

Part #

**8JD-1004-1**



Polyurethane Tip

Part #

**8JD-1005-1**

### 84N2/84N5 Single Tips

#### Standard Tips

Single Cone - Self Mounted

Tip Height	Part #
Gold - 9.6mm	<b>8JD-1013-1</b>
Silver- 10.2mm	<b>8JD-1012-1</b>
Black- 10.8mm	<b>8JD-1011-1</b>



All tip kits come with screws for mounting.

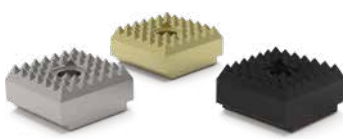


84N5 Single Serrated Tip mounted with In-Jaw Blank Sensing



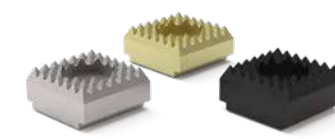
#### Standard Tips Single Serrated

Tip Height	Part #
Gold - 7.2mm	<b>8JD-1019-1</b>
Silver- 7.8mm	<b>8JD-1018-1</b>
Black- 8.4mm	<b>8JD-1017-1</b>

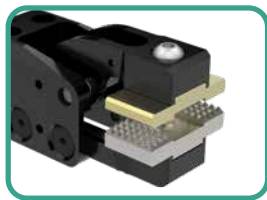


#### Tips for Sensor Single Serrated

Tip Height	Part #
Gold - 7.2mm	<b>8JD-1028-1</b>
Silver- 7.8mm	<b>8JD-1027-1</b>
Black- 8.4mm	<b>8JD-1026-1</b>



### 84N2/84N5 Double Tips



All tip kits come with screws for mounting.

84N5 Double Cone Tip mounted with In-Jaw Blank Sensing



#### Standard Tips Double Cone

Tip Height	Part #
Gold - 7.4mm	<b>8JD-1016-1</b>
Silver- 8.0mm	<b>8JD-1015-1</b>
Black- 8.6mm	<b>8JD-1014-1</b>



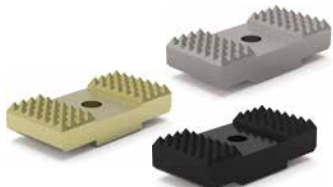
#### Tips for Sensor Double Cone

Tip Height	Part #
Gold - 7.4mm	<b>8JD-1025-1</b>
Silver- 8.0mm	<b>8JD-1024-1</b>
Black- 8.6mm	<b>8JD-1023-1</b>



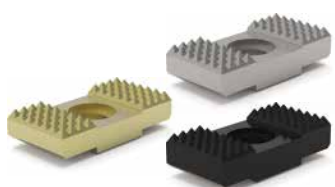
#### Standard Tips Double Serrated

Tip Height	Part #
Gold - 7.2mm	<b>8JD-1022-1</b>
Silver- 7.8mm	<b>8JD-1021-1</b>
Black- 8.4mm	<b>8JD-1020-1</b>



#### Tips for Sensor Double Serrated

Tip Height	Part #
Gold - 7.2mm	<b>8JD-1036-1</b>
Silver- 7.8mm	<b>8JD-1035-1</b>
Black- 8.4mm	<b>8JD-1034-1</b>



Catalog Pages For Accessories Are Included Within The Product Series Link.

# 84N JAW KITS & MOUNTING OPTIONS

Sheet Metal Grippers | Replacement Parts

## 84N5 Jaw Replacement Kits



Jaw Type	Part Number
Straight Fixed Lower Jaw	<b>84N5-FA-KIT</b>



Jaw Type	Part Number
90° Straight Fixed Lower Jaw	<b>84N5-PA-KIT</b>



Jaw Type	Part Number
Straight Double Open Jaws	<b>84N5-DA-KIT</b>

## 84N Mounting Options



Side Ball Mount

Ball Size	84N1/84N2	84N5
1.125" (28.5mm)	<b>GT-84N1-B112-A</b>	<b>GT-84N5-B112-A</b>
32mm	<b>GT-84N1-32B-A</b>	<b>GT-84N5-32B-A</b>



Parallel Clamp Swivel Mount

Swivel Size	84N1/84N2	84N5
1"	<b>GT-84N-GPC-100S-A</b>	<b>GT-84N5-GPC-100S-A</b>
25mm	<b>GT-84N-GPC-25MS-A</b>	<b>GT-84N5-GPC-25MS-A</b>



Apple Core Mount

Applecore Size	84N1/84N2	84N5
19mm	<b>GT-84N1-19M-A</b>	<b>GT-84N5-19M-A</b>
20mm	<b>GT-84N1-20M-A</b>	<b>GT-84N5-20M-A</b>



Parallel Clamp Swivel Mount

Swivel Size	84N1/84N2	84N5
1.25"	<b>GT-84N-GPC-125S-A</b>	<b>GT-84N5-GPC-125S-A</b>



Rear Ball Mount

Ball Size	84N1/84N2	84N5
1.125" (28.5mm)	<b>GT-84N-RBM-B112-A</b>	<b>GT-84N5-RBM-B112-A</b>
32mm	<b>GT-84N-RBM-32B-A</b>	<b>GT-84N5-RBM-32B-A</b>



Body Builder Swivel Mount

Swivel Size	84N1/84N2	84N5
30mm	<b>GT-84N-GPC-30BBS-A</b>	<b>GT-84N5-GPC-30BBS-A</b>



Rear Flange Mount

84N1/84N2	84N5
<b>GT-84N-RFM-2213-A</b>	<b>GT-84N5-RFM-2213-A</b>



25mm Rear Clamp Swivel Mount

84N1/84N2	84N5
<b>GT-84N-RSM-25MS-A</b>	<b>GT-84N5-RSM-25MS-A</b>

# 84N STOPS & SENSORS

Sheet Metal Grippers | Replacement Parts

Catalog Pages For Accessories Are Included Within The Product Series Link.

## 84N Sheet Stops



84N1/84N2 Sheet Stop Kit

Part Number

**8MH-1003-1**

Includes socket head cap mounting screws

84N5 Sheet Stop Kit

Part Number

**8MH-1053-1**

Includes socket head cap mounting screws

## 84N5 Opening Angle Adjustment Kit



84N5 Stopper and Bumper Assembly

Part Number

**8MH-1052-1**

Includes socket head cap mounting screws

## 84N In-Jaw Part Sensor Kits



Part Present Sensor Kit - 84N1 Only

Sensor Type	Part #
PNP Inductive Sensor	<b>8EA-1024-1</b>
NPN Inductive Sensor	<b>8EA-1025-1</b>
PNP 90° Inductive Sensor*	<b>8EA-1027-1</b>
NPN 90° Inductive Sensor*	<b>8EA-1028-1</b>

\*For **84N1 PC** Jaw Style only.



In-Jaw Blank Sensing - 84N2/84N5 Only

Sensor Type	Part #
PNP Inductive Sensor	<b>8EA-1033-1</b>
NPN Inductive Sensor	<b>8EA-1034-1</b>

For use with appropriate Jaw Tips only.

## 84N Side Mounted Sensor Kits



Magneto-resistive Side Mount Sensor Kit

Sensor Type	84N1/84N2	84N5
PNP Magneto-resistive Sensor Kit	<b>8EA-1035-1</b>	<b>8EA-1052-1</b>
NPN Magneto-resistive Sensor Kit	<b>8EA-1036-1</b>	<b>8EA-1053-1</b>
4 mm PNP Magneto-resistive Sensor	<b>OHSP-017</b>	
4 mm NPN Magneto-resistive Sensor	<b>OHSN-017</b>	



Infrared Part Present Sensor/Mounting Adapter

84N1/84N2
<b>8EA-1023-1</b>
Not available for 90° jaw style

## 84N Seal Kits



Seal Kits	Part #
84N1/84N2	<b>SLKT-478</b>
84N5	<b>SLKT-479</b>
Includes shock pad, rod u-cup seal, o-ring cap, piston seal and retainer ring.	

# 84N SERIES

## Specifications



84N1



84N2



84N5

Specification	Unit	84N1/84N2
Grip Force at 5 bar	N [lbs]	Up to 1000 [225]
Weight (FA Option, No Tips)	Kg [lb]	0.27 [0.6]
Size L x W x H (open)	mm [in]	110 x 43 x 64 [4.33] x [1.69] x [2.52]
Actuation Time	ms	33
Minimum Operating Pressure	bar [psi]	3 [44]
Opening Angles		30°, 45°, 60°, 75°
Piston Ø	mm [in]	25 [0.98]
Air Consumption/Cycle	L [in <sup>3</sup> ]	0,015 [0.92]
Temperature Range	C° [F°]	-35° to 80° [-31° to 176]

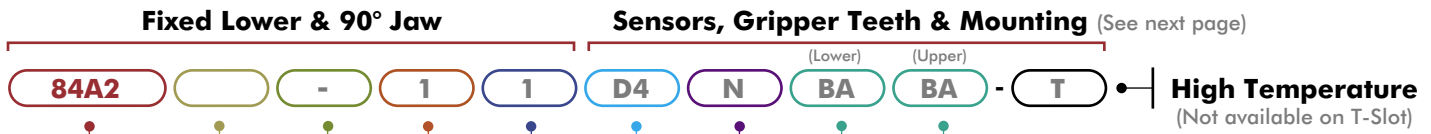
Specification	Unit	84N5
Grip Force at 5 bar	N [lbs]	up to 1200 [270]
Weight (FA Option, No Tips)	Kg [lb]	0,68 [1.50]
Size L x W x H (open)	mm [in]	149 x 46 x 95 [5.87] x [1.81] x [3.74]
Actuation Time	ms	70
Min. Operating Pressure	bar [psi]	4 [58]
Opening Angles		75°, ADJ (15°-75°)
Piston Ø	mm [in]	32 [1.26]
Air Consumption/Cycle	L [in <sup>3</sup> ]	0,036 [2.20]
Temperature Range	C° [F°]	-35° to 80° [-31° to 176]

# 84A2 SERIES (FIXED LOWER JAW)

Sheet Metal Grippers | Ordering Information

CLICK OR SCAN

To view full catalog pages on this product



## Body Style Options

Description  
**84A2** Standard  
**84AT2** Sensor T-Slot



## Porting Options

Description  
**1** (2) M5  
**V** (2) G1/8



## Jaw Arrangement Options

Description

- 1 Double Upper, Straight Design
- 2 Double Upper, 90° Design
- 4 Single Upper, Left, Straight Design
- 6 Single Upper, Right, Straight Design
- 7 Double Upper, Straight Design, Drop Jaw
- 8 Double/Single Upper Extended Jaw
- 0 Double Upper, 45° Offset Design
- 9 Fixed Upper, Double Lower Jaws, 90° Design:  
 [84A2/84AT2 (-)1/V 9] 45° Jaw Opening Angle Std.  
 [84A2/84AT2 (X)1/V 9] 30° Jaw Opening Angle Std.



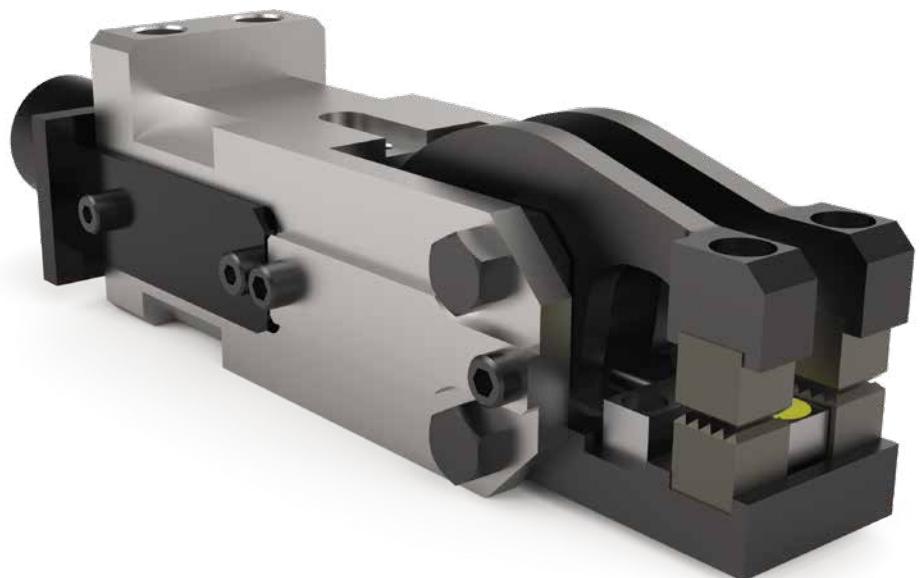
## Jaw Opening Options

Description  
 - 72° Jaw Opening (Std.)  
 X 30° Jaw Opening  
 Y 45° Jaw Opening



## Jaw Orientation Options (Option 8 Only)

Description  
 "Blank" Double Jaw  
 L Single Left Jaw  
 R Single Right Jaw



Specifications	Unit	
Piston	mm	25
Actuation Time (open/close)	sec	<0,1
Air Consumption per Double Stroke at 6 bar	L	0,32





CLICK OR SCAN

To view full catalog pages on this product

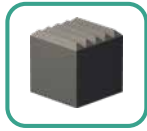
# 84A2 SERIES (FIXED LOWER JAW)

## Sheet Metal Grippers | Ordering Information

### Gripper Teeth, Points and Crown Options (Upper and Lower)

#### Steel Teeth

- 00** None
- BA** Hardened - 8JZ-027-1
- BD** Hardened (Upper) - 8JZ-049-1



- BB** Soft Steel - 8JZ-028-1



#### High Temperature (84A2 Only)

- FF** Soft Steel - 8JZ-085-1

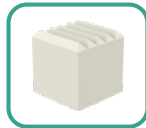


- EE** Soft Steel - 8JZ-092-1



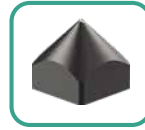
#### Plastic Teeth\*

- 00** None
- KF** 90 Shore - 8JZ-045-2
- \*Not suitable for High Temperature applications



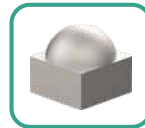
#### Steel Points

- 00** None
- PH** Hardened - 8JZ-029-1

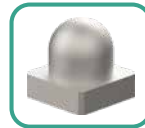


#### High Temperature (84A2 Only)

- PI** Soft Steel - 8JZ-074-1



- RR** Soft Steel - 8JZ-088-1



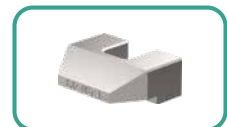
#### Crown Teeth

- 00** None
- SK** Hardened (Lower) - 8JZ-036-2
- SQ** Hardened (Lower) - 8JZ-051-1
- SL** Hardened (Upper) - 8JZ-037-1
- SM** Hardened (Upper) - 8JZ-038-1
- SN** Hardened (Upper) - 8JZ-039-1
- SP** Hardened (Upper) - 8JZ-040-1

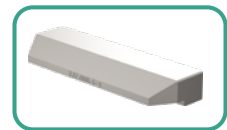


#### High Temperature (84A2 Only)

- DD** Soft Steel - 8JZ-087-1 (Lower)



- LL** Soft Steel - 8JZ-086-1 (Lower)



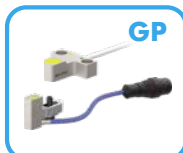
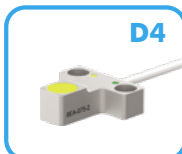
Shims for gripper teeth available Order Separately **8SB-039-1** Dimensions: 10 x 10 x 1 mm

### Sensor Options (not suitable for High Temperature applications)

#### Description

- 00** None
- D4\*** Part Present Sensor 3mm Sensing Distance, 2m Cable - 8EA-075-2
- D5** Double Sheet Control Sensor, M12x1 Plug - 8EA-087-1
- D7\*** Part Present Sensor, 3mm Sensing Distance, M12x1 Plug - 8EA-075-3
- D8** 2X Position Sensor - 8EA-109-1 (84AT2 Models Only)
- GP\*** 1X D4 + 1X D5
- GQ\*** 1X D5 + 1X D7
- GK** 2X D5 (not for 84AT2 Models)

\*For Jaw Arrangements Options 1, 2, 7, 8, 9 only.



Cable support for **D4** Sensor. Order Separately **8MA-149-1** Mounted on lower side of gripper (for 84A2-11, 84A2-V1, 84A2-18, 84A2-V8 only) (not for 84AT2 Models)

Cover for Sensing Systems **D5, GP, GQ, GK** Order Separately **82ZB-185-1**

### Mounting Options

#### Description

- 0** None
- I** Ø20mm Rear Rod 8MA-165-1
- J** Ø25mm Rear Rod 8MA-166-1
- Z** Ø1.00" Rear Rod 8MA-168-1
- L** Ø20mm Apple Core GT-20M-84A2-L-R
- M** Ø32mm Rear Ball GT-32B-84A2-L-R
- N** Ø32mm Flanged Ball GT-32B-84A2-B
- Q** Guards 8MH-054-1 (For Jaw Arrangements Options 1, 4, 6 only)
- V** Rear Flange 8MA-147-1
- W** On-Body Swivel Ball 82ZB-025-2

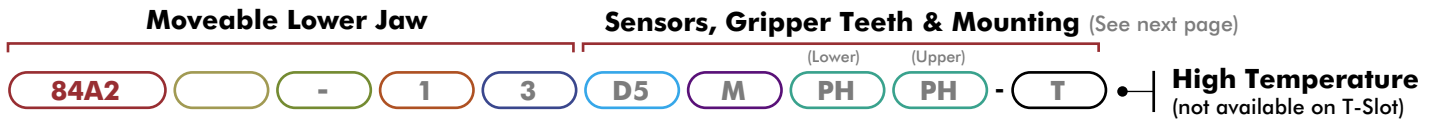


# 84A2 SERIES (MOVEABLE LOWER JAWS)

Sheet Metal Grippers | Ordering Information

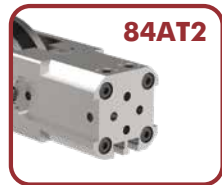
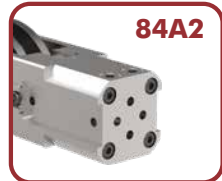
CLICK OR SCAN

To view full catalog pages on this product



## Body Style Options

- Description**  
**84A2** Standard  
**84AT2** Sensor T-Slot



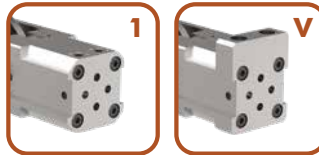
## Jaw Orientation Options

- Description**  
**"Blank"** Double (Jaw Arrangement Options 3 only)  
**L** Single Left (Jaw Arrangement Options 5 only)  
**R** Single Right (Jaw Arrangement Options 5 only)



## Porting Options

- Description**  
**1** (2) M5  
**V** (2) G1/8



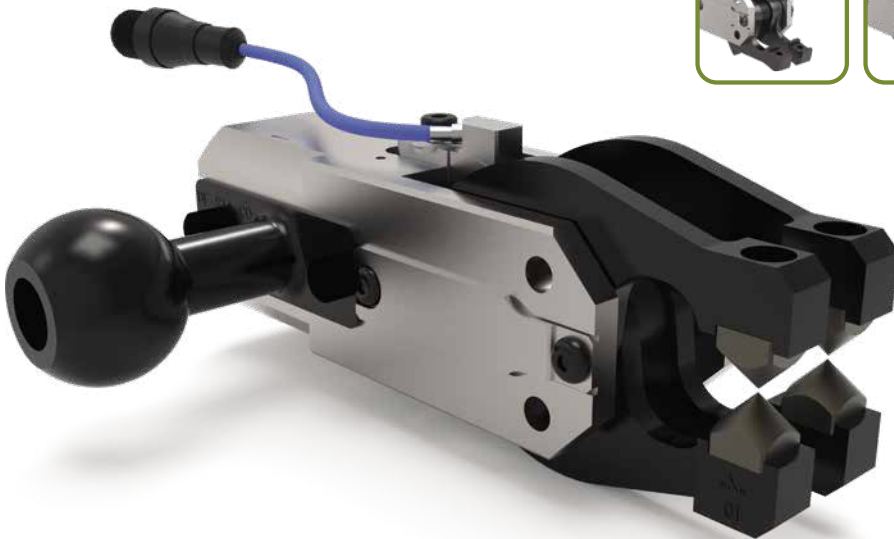
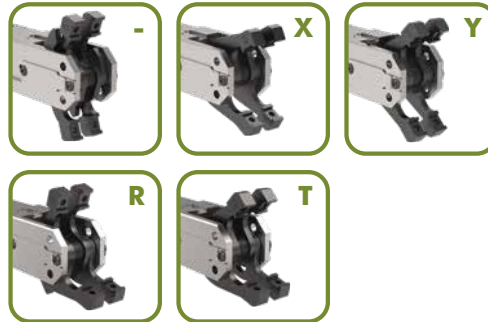
## Jaw Arrangement Options

- Description**  
**3** Double Symmetrical, Straight Design  
**5** Single Symmetrical, Straight Design



## Jaw Opening Options

- Description**  
**-** 72° Jaw Opening (Symmetrical)  
**X** 30° Jaw Opening (Symmetrical)  
**Y** 45° Jaw Opening (Symmetrical)  
**R** 72° Upper/15° Lower Jaw  
**T** 45° Upper/15° Lower Jaw



Specifications	Unit	
Piston	mm	25
Actuation Time (open/close)	sec	<0,1
Air Consumption per Double Stroke at 6 bar	L	0,32



CLICK OR SCAN

To view full catalog pages on this product

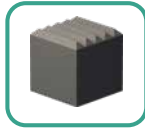
# 84A2 SERIES (MOVEABLE LOWER JAWS)

Sheet Metal Grippers | Ordering Information

## Gripper Teeth, Points and Crown Options (Upper and Lower)

### Steel Teeth

- 00** None
- BA** Hardened - 8JZ-027-1
- BD** Hardened (Upper) - 8JZ-049-1



- BB** Soft Steel - 8JZ-028-1



### High Temperature (84A2 Only)

- FF** Soft Steel - 8JZ-085-1

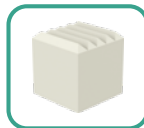


- EE** Soft Steel - 8JZ-092-1



### Plastic Teeth\*

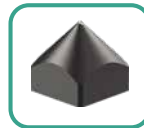
- 00** None
  - KF** 90 Shore - 8JZ-045-2
- \*Not suitable for High Temperature applications



Shims for gripper teeth available Order Separately - **8SB-039-1** Dimensions: 10 x 10 x 1 mm

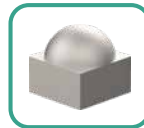
### Steel Points

- 00** None
- PH** Hardened - 8JZ-029-1

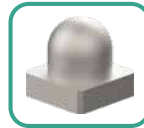


### High Temperature (84A2 Only)

- PI** Soft Steel - 8JZ-074-1



- RR** Soft Steel - 8JZ-088-1



### Crown Teeth

- 00** None
- SK** Hardened (Lower) - 8JZ-036-2
- SQ** Hardened (Lower) - 8JZ-051-1
- SL** Hardened (Upper) - 8JZ-037-1
- SM** Hardened (Upper) - 8JZ-038-1
- SN** Hardened (Upper) - 8JZ-039-1
- SP** Hardened (Upper) - 8JZ-040-1

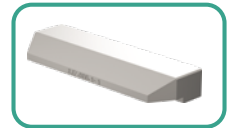


### High Temperature (84A2 Only)

- DD** Soft Steel - 8JZ-087-1 (Lower)



- LL** Soft Steel - 8JZ-086-1 (Lower)



## Sensor Options (not suitable for High Temperature applications)

### Description

- 00** None
- D5** Double Sheet Control Sensor, M12x1 Plug - 8EA-087-1
- D8** 2X Position Sensor - 8EA-109-1 (84AT2 Models Only)
- GK** 2X **D5** (not for 84AT2 Models)



Cover for Sensing Systems **D5, GK** Order Separately **82ZB-185-1**

## Mounting Options

### Description

- 0** None
- I** Ø20mm Rear Rod 8MA-165-1
- J** Ø25mm Rear Rod 8MA-166-1
- Z** Ø1.00" Rear Rod 8MA-168-1
- L** Ø20mm Apple Core GT-20M-84A2-L-R
- M** Ø32mm Rear Ball GT-32B-84A2- L-R
- N** Ø32mm Flanged Ball GT-32B-84A2- B
- V** Rear Flange 8MA-147-1
- W** On-Body Swivel Ball 82ZB-025-2



Ø25mm

Ø30mm

Both Included

# 84A3-3 SERIES (FIXED LOWER JAW)

CLICK OR SCAN  
To view full  
catalog pages  
on this product



## Sheet Metal Grippers | Ordering Information

### Fixed Lower & 90° Jaw

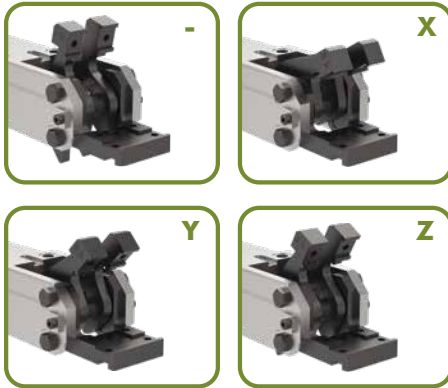
### Sensors, Gripper Teeth & Mounting (See next page)

84A3 - 31 D5 S (Lower) SF (Upper) SB - T High Temperature

### Jaw Opening Options

#### Description

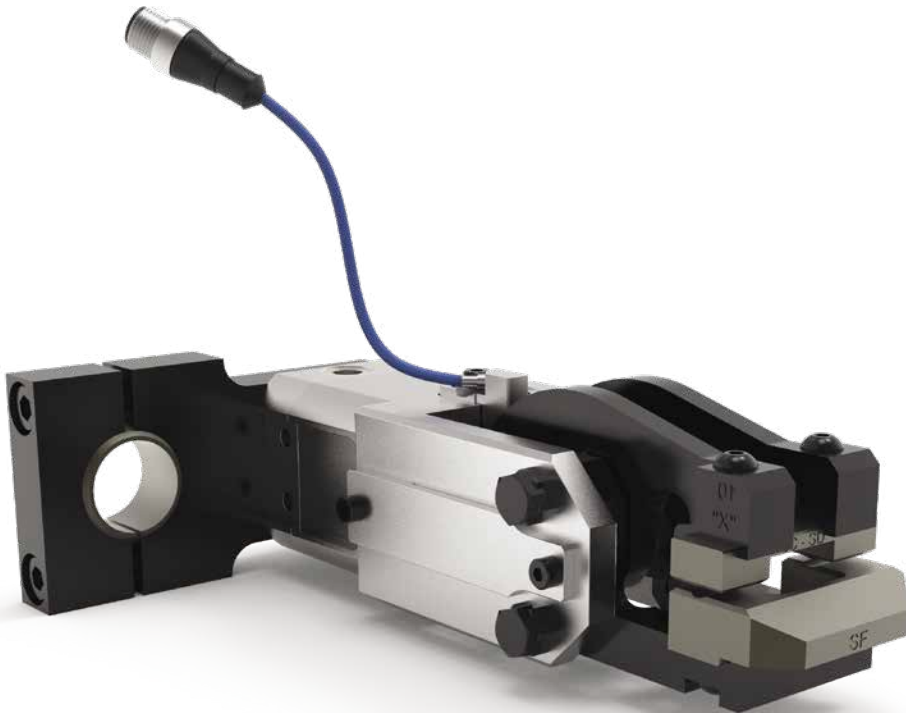
- 76° Jaw Opening (Standard)
- X 30° Jaw Opening
- Y 45° Jaw Opening
- Z 60° Jaw Opening



### Jaw Arrangement Options

#### Description

- 30 Double Upper, Straight Design, Drop Jaw
- 31 Double Upper, Straight Design
- 32 Double Upper, 90° Design
- 34 Single Upper, Right, Straight Design
- 35 Double Upper, Narrow Jaw, Straight Design
- 36 Double Upper, Extended Jaw
- 37 Double Upper, 90° Design
- 38 Double Upper, Narrow Jaw, 90° Design
- 39 Single Upper, Left, Straight Design



Specifications	Unit	
Piston	mm	32
Actuation Time (open/close)	sec	0,2
Air Consumption per Double Stroke at 5 bar	L	0,4



**CLICK OR SCAN**  
To view full  
catalog pages  
on this product

# 84A3-3 SERIES (FIXED LOWER JAW)

Sheet Metal Grippers | Ordering Information

## Gripper Teeth, Points and Crown Options (Upper and Lower)

### Steel Teeth

- 00** None
- AA** 14,9x21x12mm - 8JZ-014-3
- AH** 14,9x14x14mm - 8JZ-001-1
- AL** 14,9x14,9x9,8mm - 8JZ-003-1
- AC** 14,9x14x12mm - 8JZ-043-1
- AG** 14,9x14x12mm - 8JZ-050-1
- BK** 14,9x21x11mm - 8JZ-066-1



**High Temperature**  
**AS** 8JZ-094-1



### Plastic Teeth\*

- 00** None
  - KA** 8JZ-021-1
  - KC** 8JZ-023-1 (Upper)
- \*Not suitable for High Temperature applications



Shims for gripper teeth available  
Order Separately **8SB-003-1**  
Dimensions: 14,8 x 13 x 0,15 mm

### Steel Points (Upper only)

- 00** None
- PA** 8MJ-1001-1
- PB** 8MJ-1002-1
- PC** 8MJ-1003-1



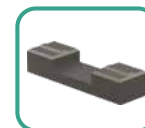
### Crown Teeth - Concave (Lower Only)

- 00** None
- SE** 8JZ-019-1  
(Not for use with A8 and GN Sensor)
- SF** 8JZ-020-3
- SH** 8JZ-048-1



### Crown Teeth - Convex (Upper Only)

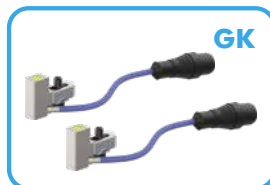
- SB** Mat. = 0,5-1mm - 8JZ-016-2
- SD** Mat. = 1-1,5mm - 8JZ-018-2



## Sensor Options (not suitable for High Temperature applications)

### Description

- 00** None
- KL** Position Control Set, Left for 76° Opening Angle - 8EA-022-4
- KR** Position Control Set, Right for 76° Opening Angle - 8EA-022-4
- A8** Workpiece Control, Switching Distance 7mm  
8EA-092-1 (for 84A3-30/31/32/36)
- D5** Double Sheet Control, M12x1 Plug - 8EA-087-1
- GK** 2X D5
- GN** 1X A8 + 1X D5 (for 84A3-30/31/32/36 only)



Shims for Sensor A8 available  
Order Separately **8MB-003-1**



Cable support for Sensing Systems **A8**  
Order Separately **8MA-175-1**  
Mounted on lower side of gripper (for 84A3-31/36 only)

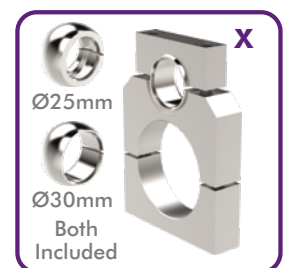


Cover for Sensing Systems **D5, GK, GN**  
Order Separately **82ZB-185-1**

## Mounting Options

### Description

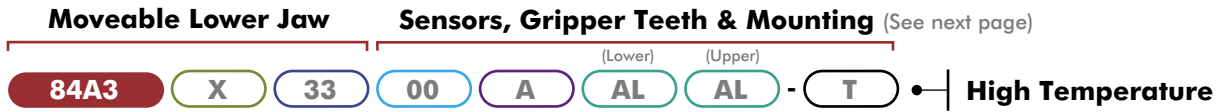
- 0** None
- A** Rear Flange - 8MA-006-1
- 3** Rear Flange - 8MA-273-1
- R** Guards - 8MH-046-1  
(for 84A3-31/34/35/39 only)
- S** Rear Swivel Ball - 82ZB-007-1
- X** On-Body Swivel Ball  
82ZB-033-2



# 84A3-3 SERIES (MOVEABLE LOWER JAWS)

Sheet Metal Grippers | Ordering Information

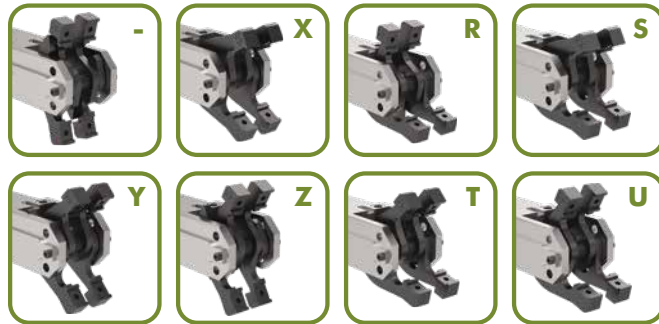
CLICK OR SCAN  
To view full  
catalog pages  
on this product



## Jaw Opening Options

**Description**

- 76° Jaw Opening (Symmetrical)    **R** 76° Upper/15° Lower Jaw
- X** 30° Jaw Opening (Symmetrical)    **S** 30° Upper/15° Lower Jaw
- Y** 45° Jaw Opening (Symmetrical)    **T** 45° Upper/15° Lower Jaw
- Z** 60° Jaw Opening (Symmetrical)    **U** 60° Upper/15° Lower Jaw



## Jaw Arrangement Options

**Description**

- 33** Double Symmetrical, Straight Design -or- 15° Lower, Double Upper, Straight Design



Specifications	Unit	
Piston	mm	32
Actuation Time (open/close)	sec	0.2
Air Consumption per Double Stroke at 5 bar	L	0.4



**CLICK OR SCAN**

To view full catalog pages on this product

# 84A3-3 SERIES (MOVEABLE LOWER JAWS)

Sheet Metal Grippers | Ordering Information

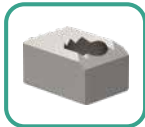
## Gripper Teeth, Points and Crown Options (Upper and Lower)

### Steel Teeth

- 00** None
- AA** 14,9x21x12mm - 8JZ-014-3
- AH** 14,9x14x14mm - 8JZ-001-1
- AL** 14,9x14,9x9,8mm - 8JZ-003-1
- AC** 14,9x14x12mm - 8JZ-043-1
- AG** 14,9x14x12mm - 8JZ-050-1
- BK** 14,9x21x11mm - 8JZ-066-1

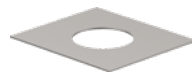


**High Temperature**  
**AS** 8JZ-094-1



### Plastic Teeth\*

- 00** None
  - KA** 8JZ-021-1
  - KC** 8JZ-023-1 (Upper)
- \*Not suitable for High Temperature applications



Shims for gripper teeth available  
Order Separately **8SB-003-1**  
Dimensions: 14,8 x 13 x 0,15 mm

### Steel Points (Upper only)

- 00** None
- PA** 8MJ-1001-1
- PB** 8MJ-1002-1
- PC** 8MJ-1003-1



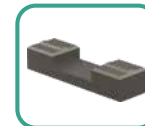
### Crown Teeth - Concave (Lower Only)

- 00** None
- SE** 8JZ-019-1
- SF** 8JZ-020-3
- SH** 8JZ-048-1



### Crown Teeth - Convex (Upper Only)

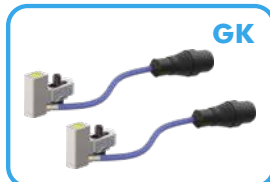
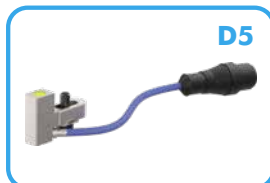
- SB** Mat. = 0,5-1mm - 8JZ-016-2
- SD** Mat. = 1-1,5mm - 8JZ-018-2



## Sensor Options (not suitable for High Temperature applications)

### Description

- 00** None
- KL** Position Control Set, Left for 76° Opening Angle - 8EA-022-4
- KR** Position Control Set, Right for 76° Opening Angle - 8EA-022-4
- D5** Double Sheet Control, M12x1 Plug - 8EA-087-1
- GK** 2X D5

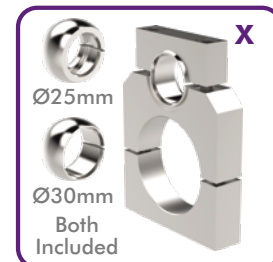


Cover for Sensing Systems **D5, GK**  
Order Separately **82ZB-185-1**

## Mounting Options

### Description

- 0** None
- A** Rear Flange - 8MA-006-1
- 3** Rear Flange - 8MA-273-1
- S** Rear Swivel Ball - 82ZB-007-1
- X** On-Body Swivel Ball - 82ZB-033-2



# 84A5-1 SERIES

## Sheet Metal Grippers | Ordering Information

CLICK OR SCAN  
To view full  
catalog pages  
on this product

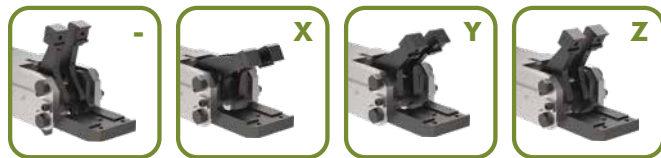


84A5 - 11 D5 A AA PA

### Fixed Lower Jaw Opening Options

**Description**

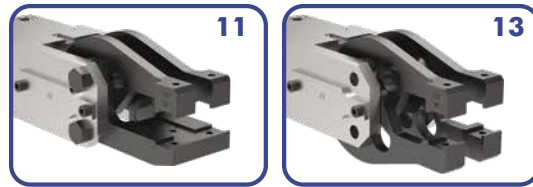
- 76° Jaw Opening (Standard)
- X 30° Jaw Opening
- Y 45° Jaw Opening
- Z 60° Jaw Opening



### Jaw Arrangement Options

**Description**

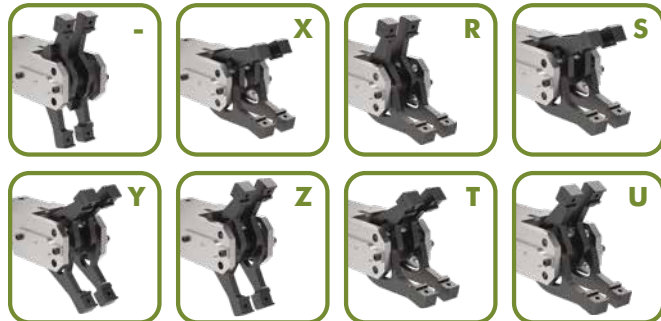
- 11 Double Upper, Single Lower, Straight Design
- 13 Double Upper and Lower, Straight Design



### Moveable Lower Jaw Opening Options

**Description**

- 76° Jaw Opening (Symmetrical)
- X 30° Jaw Opening (Symmetrical)
- Y 45° Jaw Opening (Symmetrical)
- Z 60° Jaw Opening (Symmetrical)
- R 76° Upper/15° Lower Jaw
- S 30° Upper/15° Lower Jaw
- T 45° Upper/15° Lower Jaw
- U 60° Upper/15° Lower Jaw



Specifications	Unit	
Piston	mm	50
Actuation Time (open/close)	sec	0.6
Air Consumption per Double Stroke at 5 bar	L	0.66





**CLICK OR SCAN**

To view full catalog pages on this product

# 84A5-1 SERIES

## Sheet Metal Grippers | Ordering Information

### Gripper Teeth and Points Options (Upper and Lower)

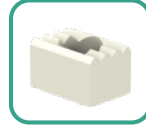
#### Steel Teeth

- 00** None
- AA** 8JZ-014-3



#### Plastic Teeth

- 00** None
- KA** 8JZ-021-1\*



\*Cannot be used with **A8** sensor option.

#### Steel Points (Upper only)

- 00** None
- PA** 8MJ-1001-1
- PB** 8MJ-1002-1
- PC** 8MJ-1003-1

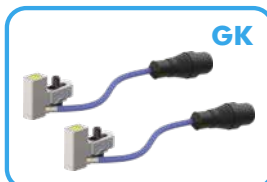
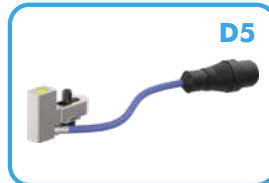


Shims for gripper teeth available  
Order Separately **8SB-003-1**  
Dimensions: 14,8 x 13 x 0,15 mm

### Sensor Options

- |           | Description                                                                |
|-----------|----------------------------------------------------------------------------|
| <b>00</b> | None                                                                       |
| <b>A8</b> | Workpiece Control, Switching Distance 7mm<br>8EA-092-1 (for 84A5-11 only)* |
| <b>D5</b> | Double Sheet Control, M12x1 Plug - 8EA-087-1                               |
| <b>GK</b> | 2X <b>D5</b>                                                               |
| <b>GN</b> | <b>A8</b> + <b>D5</b> (for 84A5-11 only)                                   |

\*Cannot be used with **KA** plastic teeth option.



Shims for Sensor A8 available  
Order Separately **8MB-003-1**

### Mounting Options

- |          | Description             |
|----------|-------------------------|
| <b>0</b> | None                    |
| <b>A</b> | Rear Flange - 8MA-196-1 |



# 84L2-1 SERIES

## Sheet Metal Grippers | Ordering Information

CLICK OR SCAN

To view full  
catalog pages  
on this product

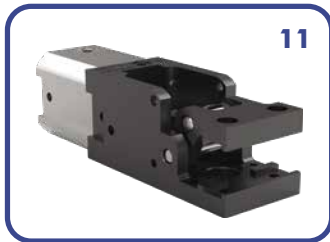


84L2 - 11 D4 W (Lower) BA (Upper) BA

### Jaw Arrangement Options

Description

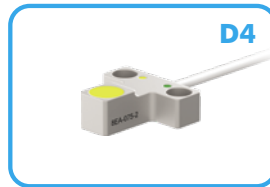
- 11 Double
- 14 Single, Right
- 16 Single, Left



### Sensor Options

Description

- 00 None
- D4 Part Present Sensor, 3mm Sensing Distance, 2m Cable  
8EA-075-2
- D7 Part Present Sensor, 3mm Sensing Distance, M12x1 Plug  
8EA-075-3





**CLICK OR SCAN**

To view full catalog pages on this product

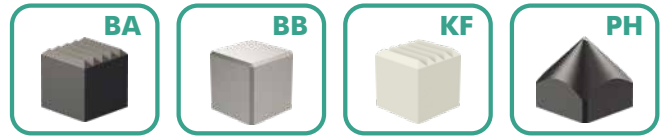
# 84L2-1 SERIES

## Sheet Metal Grippers | Ordering Information

### Gripper Teeth Options

#### Upper Teeth Options

- 00** None
- BA** Hardened - 8JZ-027-1
- BB** Soft Steel - 8JZ-028-1
- KF** 90 Shore - 8JZ-045-2
- PH** Hardened - 8JZ-029-1



#### Lower Teeth Options

- 00** None
- BA** Hardened - 8JZ-027-1
- BB** Soft Steel - 8JZ-028-1
- KF** 90 Shore - 8JZ-045-2



Shims for gripper teeth available  
Order Separately **8SB-039-1**  
Dimensions: 10 x 10 x 0,1 mm

### Mounting Options

#### Description

- 0** None
- I** Ø20mm Rear Rod - 8MA-165-1
- J** Ø25mm Rear Rod - 8MA-166-1
- Z** Ø1.00" Rear Rod - 8MA-168-1
- V** Rear Flange - 8MA-147-1
- W** On-Body Swivel Ball - 82ZB-025-2



# 84L3-2 SERIES

## Sheet Metal Grippers | Ordering Information

CLICK OR SCAN

To view full catalog pages on this product



### Jaw Arrangement Options

Description

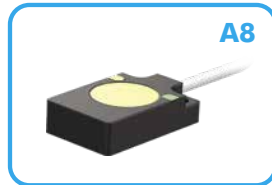
- 21** Double
- 24** Single, Right
- 26** Single, Left



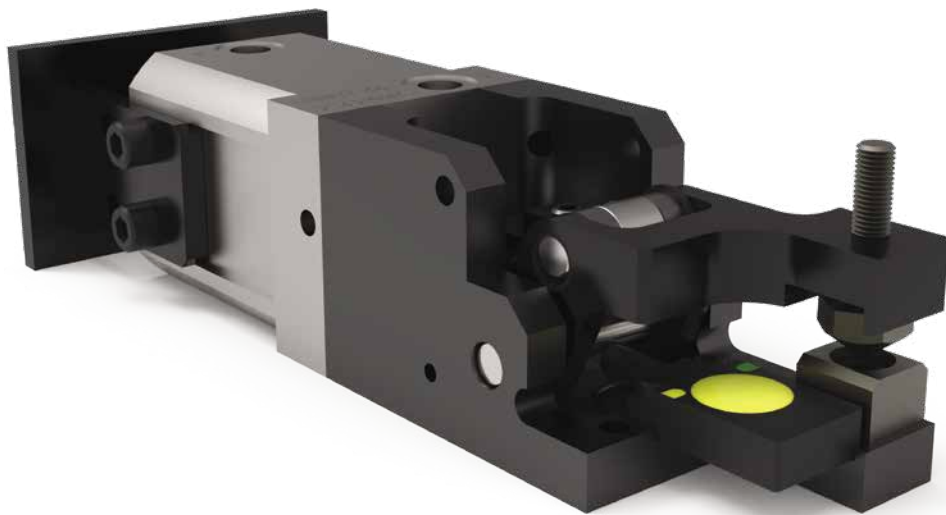
### Sensor Options

Description

- 00** None
- A8** Workpiece Control, Switching Distance 7mm  
8EA-092-1
- A9** Workpiece Control, Switching Distance 7mm,  
M12x1 Plug, 3 Pin - 8EA-092-2



Shims for Sensor available  
Order Separately **8MB-003-1**





**CLICK OR SCAN**

To view full catalog pages on this product

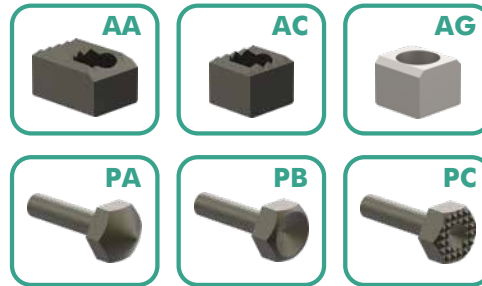
# 84L3-2 SERIES

## Sheet Metal Grippers | Ordering Information

### Gripper Teeth and Points Options

#### Upper Teeth Options

- 00** None
- AA** 14,9x21x12mm - 8JZ-014-3
- AC** 14,9x14x12mm - 8JZ-043-1
- AG** 14,9x14x12mm - 8JZ-050-1
- PA** 8MJ-1001-1
- PB** 8MJ-1002-1
- PC** 8MJ-1003-1



#### Lower Teeth Options

- 00** None
- AA** 14,9x21x12mm - 8JZ-014-3
- AC** 14,9x14x12mm - 8JZ-043-1
- AG** 14,9x14x12mm - 8JZ-050-1

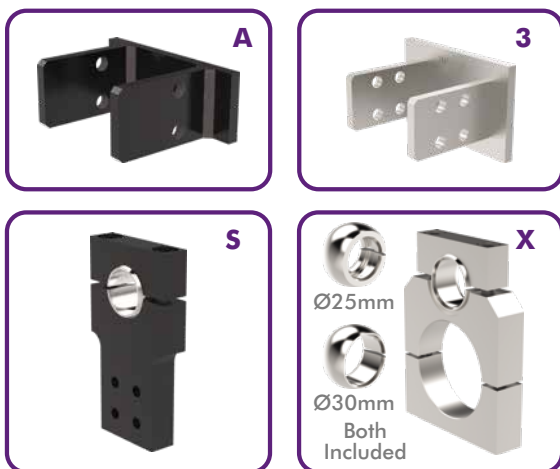


Shims for gripper teeth available  
Order Separately **8SB-003-1**  
Dimensions: 14,8 x 13 x 0,15 mm

### Mounting Options

#### Description

- 0** None
- A** Rear Flange - 8MA-006-1
- 3** Rear Flange - 8MA-273-1
- S** Rear Swivel Ball - 82ZB-007-1
- X** On Body Swivel Ball - 82ZB-033-2



# GR84-15 SERIES

## Sheet Metal Grippers | Ordering Information

CLICK OR SCAN

To view full catalog pages on this product



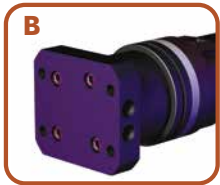
GR84-15 - BE - DD - 9S9 - RRSS - A1 - XX - 01

### Cylinder Type & Porting

Step 1 - Cylinder Type Choose One

**B** **E**

- B** Flange Base
- C** Round Cylinder



Step 2 - Cylinder Ports Choose One

**B** **E**

- E** English (1/8 NPT)
- M** Metric (1/8 G)

### Jaw Arm Option

Description

**DD** Double Arm

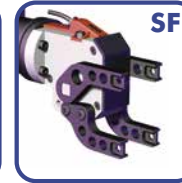
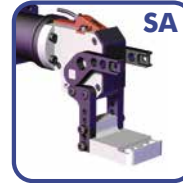
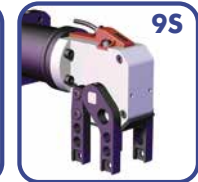
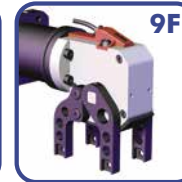
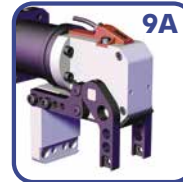


### Jaw Arrangement & Opening

Step 1 - Jaw Arrangement Choose One

**9S** **9**

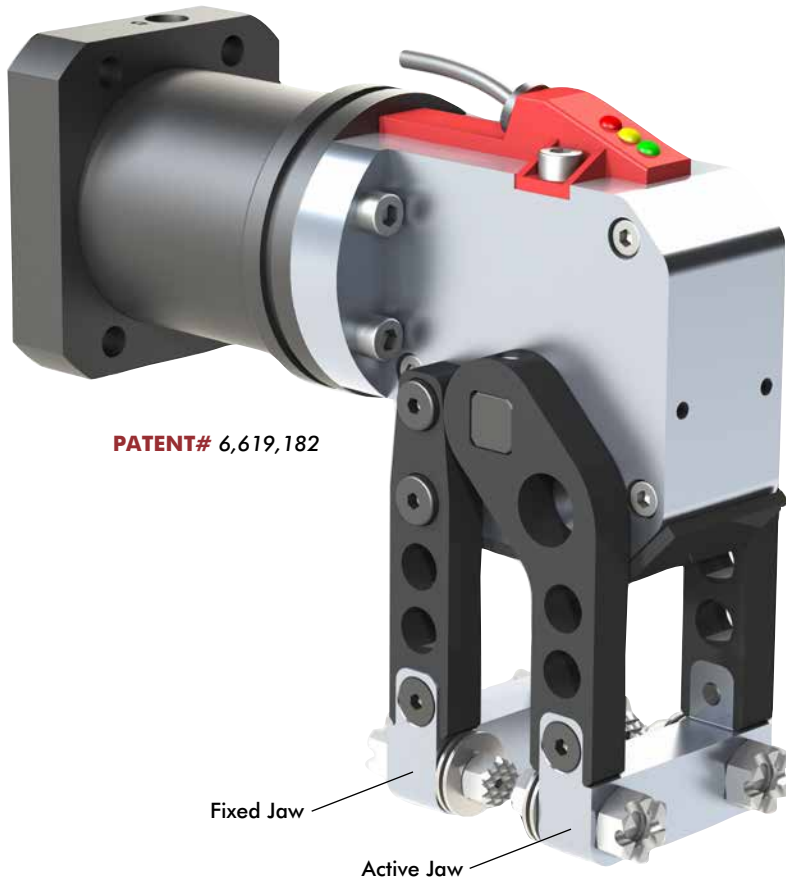
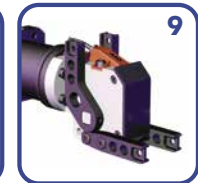
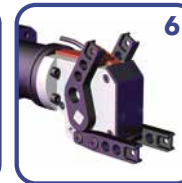
- 9A** 90° Grip Adj. Flange
- 9F** 90° Grip Flange
- 9S** 90° Grip Standard
- SA** Straight Adj. Flange
- SF** Straight Flange
- SS** Straight Standard



Step 2 - Active Jaw Opening Choose One

**9S** **9**

- 3** 30° Preset
- 6** 60° Preset
- 9** 90° Preset



PATENT# 6,619,182

Fixed Jaw

Active Jaw

**Mounting options are ordered separately:**

Please refer to mounting options on page 32 mounting style and part number.



CLICK OR SCAN

To view full catalog pages on this product

# GR84-15 SERIES

## Sheet Metal Grippers | Ordering Information

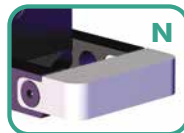
### Jaw Block & Insert Options

Step 1 - Active Jaw Block Option Choose One

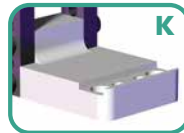
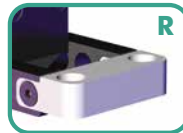
**R R S S**

**X** No Block  
**R** Regular Block

**N** Blank Block (No Tips)  
**M** Jaw Block for Block Inserts "B" Only



For **9F 9S SF SS**:  
When choosing Active Jaw Block "M" Fixed Jaw Block must be "M"  
**M M B S**



For **9A SA**:  
When choosing Active Jaw Block "M" Fixed Jaw Block must be "K"  
**M K B S**

Step 2 - Fixed Jaw Block Options Choose One Above -or-

**R R S S**

**L** Flange Block (for **9F** & **SF** Fixed Jaw Only)  
**K** Adjustable Jaw Block (for **9A** & **SA** Fixed Jaw Only)

Step 3 - Active Jaw Insert Options Choose One

**R R S S**

**P** Point **T** Self-Adjusting Serrated **N** Non-Standard  
**C** Cup **X** None  
**U** Urethane **Z** Blank  
**S** Serrated **B** Block (\*See **STEP 4** below for **Block Insert Options**)



Step 4 - Fixed Jaw Insert Options Choose One Above

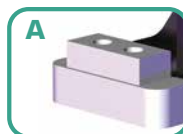
**R R S S**

-or-

Step 4 - "B" Block Insert Options Choose One  
\*(Active and Fixed Jaws Use Common Inserts)

**M M B S**

**S** Serrated  
**U** Urethane  
**A** Aluminum  
**N** Non-Standard



(Sensing mounts can not be used with (B) Block Option inserts)

### Guard Options

Description

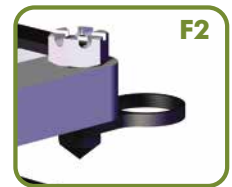
**XX** No Face Guard  
**01** Face Guard  
**02** Face + Skid Guard



### Sensor Mounts

Description

**XX** No Sensor Mounts  
**F1** Ø18mm Sensor  
**F2** Ø12mm Sensor



### Sensor Options

Description

**A1** (Turck) VDC  
**B8** (Pepperl Fuchs) VDC  
**C8** (DE-STA-CO) VDC  
**C9** (Allen-Bradley) VDC  
**D1** (Turck) AC/DC  
**E3** (Namco) VDC  
**E4** (Pepperl Fuchs) VDC  
**E5** (Efcator) VDC  
**E6** (Baluff) VDC  
**XC** Cover Only

# GR1-15 SERIES

## Sheet Metal Grippers | Ordering Information

CLICK OR SCAN

To view full  
catalog pages  
on this product



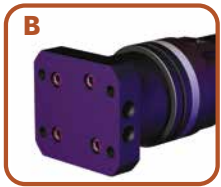
**GR1-15** - **BE** - **045** - **DPP** - **MXX** - **XXX** - **XXX**

### Cylinder Type & Porting

Step 1 - Cylinder Type Choose One

**B** **E**

- B** Flange Base
- C** Round Cylinder



Step 2 - Cylinder Ports Choose One

**B** **E**

- E** English (1/8 NPT)
- M** Metric (1/8 G)

### Jaw Arrangement Options

Step 1 - Jaw Arrangement Choose One

- 045** 45° Angular
- 45C** 45° Chisel
- FCH** 45° Fixed Chisel
- 9DJ** 90° Drop Jaw
- 90F** 90° Fixed Lower
- 9FS** 90° Fixed Lower Limited Stroke
- 180** 180° Angular



**PATENT#S** 6,619,182 , 6,988,696 , 6,361,095





CLICK OR SCAN

To view full catalog pages on this product

# GR1-15 SERIES

## Sheet Metal Grippers | Ordering Information

### Open/Closed Sensor

Sensors Type	Description
<b>T04</b>	Internal Sensor
<b>XXX</b>	No Sensor

### Part Present Sensor

Sensor Type	Description
<b>A04</b>	Turck (4-PIN)
<b>P03</b>	P & F (4-PIN)
<b>XXX</b>	No Sensor

### Mount Options

#### Step 1 - Mount Type Choose One

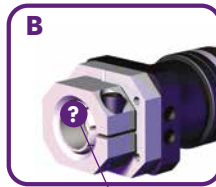
- M**
- A** Parallel Swivel Mount
  - B** Rear Swivel Clamp Mount
  - C** Rear Fixed Welded Style
  - D** Rear Fixed Clamp Mount
  - X** No Mount

#### Step 2 - Mount Ball/Rod Size Choose One

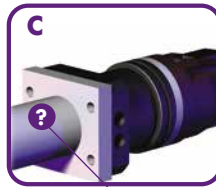
- M**
- |                                   |                              |
|-----------------------------------|------------------------------|
| <b>1</b> 1.00" W/Metric Fasteners | <b>5</b> 1.50" (Type C Only) |
| <b>2</b> 1.25" W/Metric Fasteners | <b>6</b> 40Mm (Type C Only)  |
| <b>3</b> 25Mm Metric Fasteners    | <b>7</b> M1514 (Type D Only) |
| <b>4</b> 30Mm Bodybuilder/Metric  | <b>X</b> No Mount            |



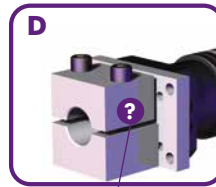
**1 2 3 4**  
Mount Ball Sizes Available



**1 2 3 4**  
Mount Ball Sizes Available



**1 3 5 6**  
Mount Rod Sizes Available

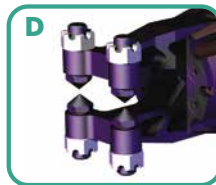
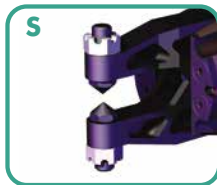


**7**  
Mount Size Available

### Points & Tip Insert Options

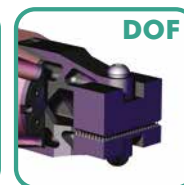
#### Step 1 - Point Tip Options Choose One

- D**  **P**
- S** Single Point
  - D** Double Point



### - or - Block Insert Options

- Block Insert** Choose One
- DDB** Double Draw Bead
  - DOF** Double Offset
  - D30** Double 30° Angle
  - SDB** Single Draw Bead
  - SOF** Single Offset
  - S30** Single 30° Angle
  - SED** Single Extended Draw Bead



#### Step 2 - Upper Tip Insert Options Choose One

- D**  **P**
- P** Point
  - C** Cup
  - U** Urethane
  - S** Serrated
  - X** No Tips



#### Step 3 - Lower Tip Insert Options Choose One Above

- D**  **P**

# GR1-20 SERIES

## Sheet Metal Grippers | Ordering Information

CLICK OR SCAN

To view full catalog pages on this product



GR1-20 - BE - 180 - DX - MX -

### Cylinder Type & Porting

Step 1 - Cylinder Ports Choose One

**B** **E**

- E** English (1/8 NPT)
- M** Metric (1/8 G)

### Open/Closed Sensor

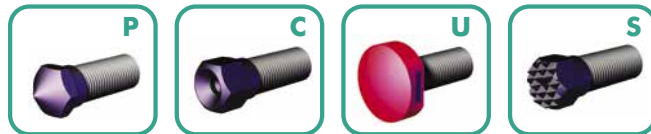
Sensors Type	Description
<b>T04</b>	Internal Sensor
(Leave Blank)	No Sensor

### Tip Insert Options

Step 2 - Upper Tip Insert Options Choose One

**D** **P** **P**

- P** Point
- C** Cup
- U** Urethane
- S** Serrated
- X** No Tips



Step 3 - Lower Tip Insert Options Choose One Above

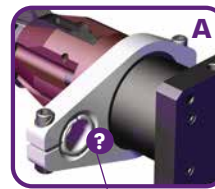
**D** **P** **P**

### Mount Options

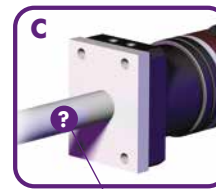
Step 1 - Mount Type Choose One

**M** **X** **X**

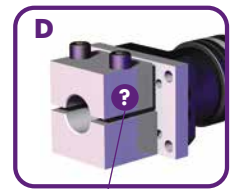
- A** Parallel Swivel Mount
- C** Rear Fixed Welded Style
- D** Rear Fixed Clamp Mount
- X** No Mount



**1** **3**  
Mount Ball Sizes Available



**1** **3**  
Mount Rod Sizes Available



**7**  
Mount Size Available

Step 2 - Mount Ball/Rod Type Choose One

**M** **X** **X**

- 1** 1.00" W/Metric Fasteners (A & C Only)
- 3** 25Mm Metric Fasteners (A & C Only)
- 7** M1514 (Type D Only)
- X** No Mount

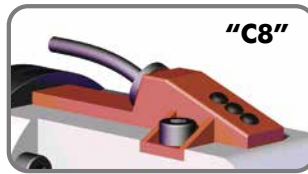


Catalog Pages For Accessories Are Included Within The Product Series Link.

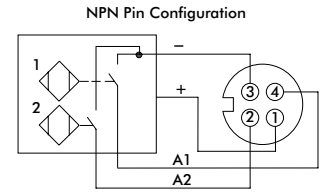
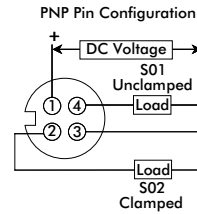
# GR SERIES SENSORS AND ACCESSORIES

## Sheet Metal Grippers | Ordering Information

### GR-84 Replacement Sensors and Mounts

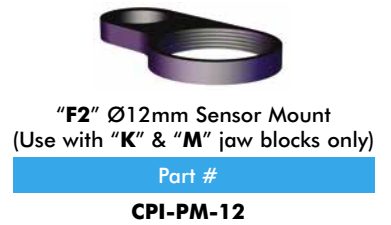
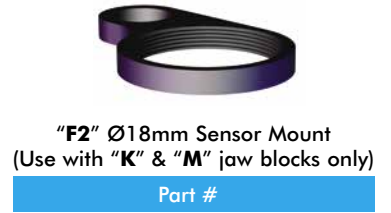


### Wiring Diagram of Electrical Sensing System



#### GR-84 Open/Close Sensors

Option	Brand	Specifications	Part #
<b>A1*</b>	Turck	10...30 VDC 150mA, PNP, 4-Pin, M12, Eurofast	<b>8EA-054-1 + GR84-SB</b>
<b>B8</b>	Pepperl Fuchs	10...30 VDC 150mA, PNP, 4-Pin, M12, Eurofast	<b>8EA-031-1</b>
<b>C8</b>	Destaco	10...30 VDC 150mA, PNP, 4-Pin, M8, Pico	
<b>C9</b>	Allen-Bradley	10...30 VDC 150mA, PNP, 4-Pin, M12, Eurofast	<b>8EA-1006-1</b>
<b>D1</b>	Turck	20...250 AC/DC 150mA, 5-Pin, 1/2-20, Mini	<b>8EA-1002-1</b>
<b>E3</b>	Namco	10...30 VDC 150mA, NPN, 4-Pin, M12	<b>8EA-1007-1</b>
<b>E4</b>	Pepperl Fuchs	10...30 VDC 150mA, PNP, 4-Pin, M12, Eurofast	<b>8EA-1010-1</b>
<b>E5</b>	Efector	10...30 VDC 150mA, PNP, 4-Pin, M12, Eurofast	<b>8EA-1012-1</b>
<b>E6</b>	Baluff	10...30 VDC 150mA, PNP, 4-Pin, M12, Eurofast	<b>8EA-1019-1</b>
<b>XC</b>		Cover Only	<b>GR84-SC</b>



\*Fasteners required for "A1" replacement: (2) M5x0.5 10mm FHCS, (1) M4 x 0.7 20mm SHCS

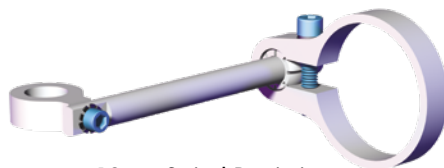
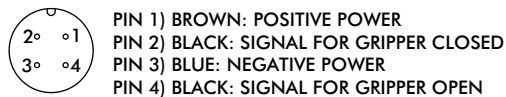
### GR-15, GR-20 Replacement Sensors and Mounts

#### GR1-15 Part Present Sensors

Option	Brand	Specifications	Part #
<b>A04</b>	Turck	10...30 VDC 150mA, PNP, 4-Pin, M12, Eurofast	<b>Bi 5-Q08-VP6X2-0.2M-RS4.4T</b>
<b>P03</b>	Pepperl Fuchs	10...30 VDC 150mA, PNP, 4-Pin, M12, Eurofast	<b>NBB5-F104M-E2-C-200MM-V1</b>

(Sensors include "GR0326" Proximity Switch Mount when ordered with GR1-15 Series)

### Wiring Diagram of Electrical Sensing System



18mm Swivel Proximity Sensor Mount

Part #  
**CPI-GPM-15-18**



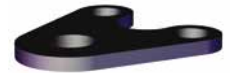
Proximity Switch Mount

Part #  
**GR0326**



Ø18mm Inline Proximity Switch Mount

Part #  
**CPI-PM-15D-18**



Ø12mm Inline Proximity Switch Mount

Part #  
**CPI-PM-15D-12**



Barrel Style Proximity Switch Mount

Part #  
**GR1-15-PM-31**



Ø18mm Offset Proximity Switch Mount

Part #  
**CPI-PM-15S-12**



Ø12mm Offset Proximity Switch Mount

Part #  
**CPI-PM-15S-12**

#### GR1-15, GR1-20 Open/Close Sensors

Option	Specifications	Part #
<b>T04</b>	3 amps, 250 volts, VDC 4-Pin Euro Micro Connector	<b>CPI-GR1-15-TK-DC-T04</b>

(This sensor option is used in conjunction with a special gripper body used in place of the standard gripper body in order for the sensor to function properly)



# GR SERIES REPLACEMENT PARTS

Sheet Metal Grippers | Ordering Information

Catalog Pages For Accessories Are Included Within The Product Series Link.

## GR Series Replacement Cylinders



**GR-84 Series**  
"Bx" Flange Base Cylinder

Part #

**GR84-CYL-B**



**GR-84 Series**  
"Cx" Flange Base Cylinder

Part #

**GR84-CYL-C**



**GR1-15 Series**  
"Bx" Flange Base Cylinder

Part #

**GR1-CYL-B**



**GR1-15 Series**  
"Cx" Flange Base Cylinder

Part #

**GR1-CYL-C**

## GR Series Replacement Jaw Inserts



Point Jaw Insert

Fits

Part #

GR-84/GR-20

**GR0107**

GR-15 **GR0304**



Cup Jaw Insert

Fits

Part #

GR-84/GR-20

**GR0108**

GR-15 **GR0305**



Serrated Jaw Insert

Fits

Part #

GR-84/GR-20

**GR0342**

GR-15 **GR0341**



Self-Adjusting  
Serrated Jaw Insert

Fits

Part #

GR-84

**329-TPR-BDA-047**



Urethane Jaw Insert

Fits

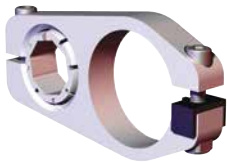
Part #

GR-84/GR-20

**GR0353**

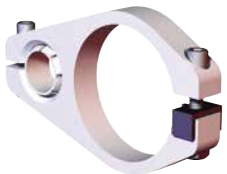
GR-15 **GR0338**

## GR Series Replacement Mounts



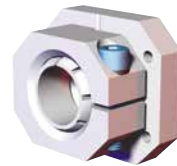
**GR-84/GR1-15 Swivel Parallel Gripper Mounts**

Option	Size	Part #
MA1	Ø1.00"	<b>CPI-GPC-150-100S-DC</b>
MA2	Ø1.25"	<b>CPI-GPC-150-125S-DC</b>
MA3	Ø25mm	<b>CPI-GPC-150-25MS-DC</b>
MA4	30mm BB*	<b>CPI-GPC-150-30BBS-DC</b>



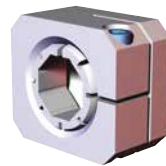
**GR1-20 Swivel Parallel Gripper Mounts**

Option	Size	Part #
MA1	Ø1.00"	<b>CPI-GPC-200-100S-DC</b>
MA3	Ø25mm	<b>CPI-GPC-200-25MS-DC</b>



**GR-84/GR-20 Rear Swivel Gripper Mount**

Option	Size	Part #
MB1	Ø1.00"	<b>CPI-RJM-150-100S</b>
MB3	Ø25mm	<b>CPI-RJM-150-25S</b>



**GR-84/GR-20 Rear Swivel Gripper Mount**

Option	Size	Part #
MB2	Ø1.25"	<b>CPI-RJM-150-125S</b>
MB4	30mm BB*	<b>CPI-RJM-150-30BBS</b>

BB=BodyBuilder™ octagonal booms



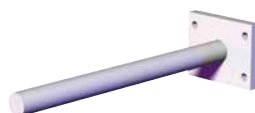
**Snap-In Ball**

Special patented design allows user to replace ball without disassembly



**GR Series Rear Fixed Clamp Mount**

Option	Size	Part #
MB7	Ø1.00"	<b>M1514</b>



**GR1-20 Rear Fixed Welded Mount**

Option	Size	Part #
MC1	Ø1.00"	<b>CPI-RJM-200-100</b>
MC3	Ø25mm	<b>CPI-RJM-200-25</b>

Catalog Pages For Accessories Are Included Within The Product Series Link.

# GR SERIES REPLACEMENT PARTS

Sheet Metal Grippers | Ordering Information

## GR-84 Replacement Jaws



Preset Active Jaw

Part #

**GR84-JRA**



Standard Fixed Jaw

Part #

**GR84-JFA**



Flanged Fixed Jaw

Part #

**GR84-JA-F-L (LEFT HAND)**  
**GR84-JA-F-R (RIGHT HAND)**

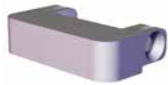


Adjustable Fixed Jaw

Part #

**GR84-JA-EX-R (RIGHT HAND)**  
**GR84-JA-EX-L (LEFT HAND)**

## GR-84 Replacement Jaws Blocks



Blank Jaw Block

Part #

**GR84-JB**



Point Inset Jaw Block

Part #

**GR84-JB-3824**



Block Inset Jaw Block

Part #

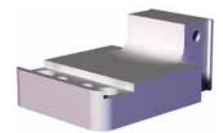
**GR84-JB-BM6**



Flange Point Inset Jaw Block

Part #

**GR84-JB-F-3824**

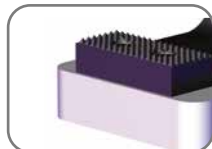


Adjustable Jaw Block

Part #

**GR84-JB-ADJ**

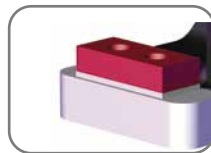
## GR-84 Replacement Blocks Inserts



Serrated Block Inserts

Part #

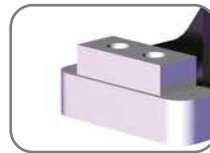
**GR84-JB-SS**



Urethane Block Inserts

Part #

**GR84-JB-UP**



Aluminum Block Inserts

Part #

**GR84-JB-PA**

## GR-84 Replacement Face and Skid Guard



Part #

**GR84-JFG**

## GR-15 Series Replacement Block Inserts

Tip Risers for Block Inserts **GR0314-TR**



Single Upper/Lower 30° Angle Insert Block

Part #

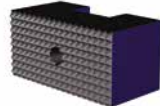
**GR1-INS-SD30S**



Single Upper Offset Insert Block

Part #

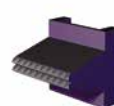
**GR1-INS-SDUOS**



Double Upper Offset Insert Block

Part #

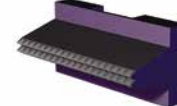
**GR1-INS-DUOS**



Single Upper Draw Bead Insert Block

Part #

**GR1-INS-SDDB**



Double Upper Draw Bead Insert Block

Part #

**GR1-INS-DOB**



Upper Extended Draw Bead Insert Block

Part #

**GR1-INS-SDDB-3**



Double Upper/Lower 30° Angle Insert Block

Part #

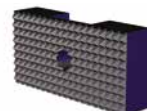
**GR1-INS-D30S**



Single Lower Offset Insert Block

Part #

**GR1-INS-SDL0S**



Double Lower Offset Insert Block

Part #

**GR1-INS-DL0S**



Single Lower Draw Bead Insert Block

Part #

**GR1-INS-SDL0S**



Double Lower Draw Bead Insert Block

Part #

**GR1-INS-DL0S**



Lower Extended Draw Bead Insert Block

Part #

**GR1-INS-SDDB-3**

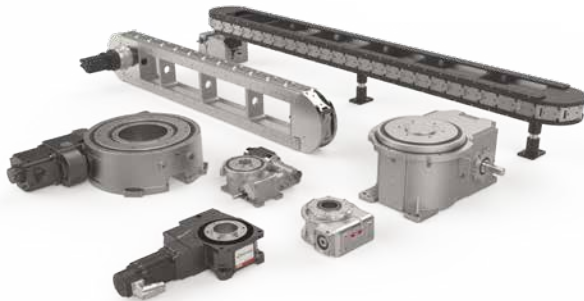


# OUR PORTFOLIO OF PRODUCTS



## End Effectors (EE)

- Tool Changers
- End-of-Arm Tooling
- Vacuum Products
- Palletizing Solutions



## Indexers (IN)

- Precision Conveyors
- Dial Indexers
- Shaft and Flange Indexers
- Part Handlers



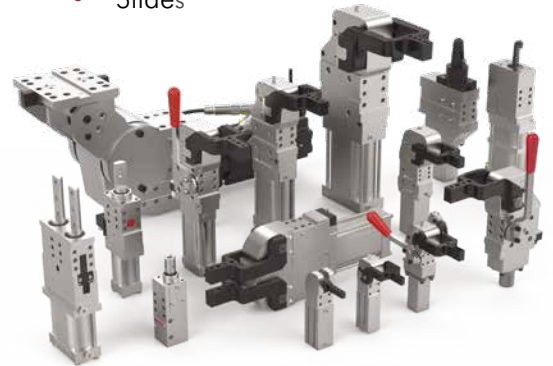
## Manual Clamps (MC)

- Hold Down
- Squeeze Action
- Plunger, Hook and Latch
- Pneumatic Toggle and Swing



## Grippers (GR)

- Electric Grippers
- Pneumatic and Sheet Metal Grippers
- Rotates
- Slides



## Power Clamps (PC)

- Power Clamps
- Pin Clamps and Packages
- Pivot Units
- Power Cylinders



## Sheet Metal Grippers (SM)

- Accelerate® Press Shop
- Cam Type
- Toggle Lock



## GLOBAL LOCATIONS

### NORTH AMERICA

#### Corporate Headquarters

Auburn Hills, Michigan  
Toll Free: 1.888.DESTACO  
Marketing: [marketing@destaco.com](mailto:marketing@destaco.com)

#### Global Technology Center

Auburn Hills, Michigan  
Tel: 1.248.836.6700  
Customer Service: [customerservice@destaco.com](mailto:customerservice@destaco.com)

Mt. Juliet, Tennessee  
Tel: 1.888.DESTACO  
Customer Service: [customerservice@destaco.com](mailto:customerservice@destaco.com)

Wheeling, Illinois  
Tel: 1.800.645.5207  
Customer Service: [camco@destaco.com](mailto:camco@destaco.com)

Red Wing, Minnesota (Central Research Laboratories)  
Tel: 651.385.2142  
Customer Service: [sales@centres.com](mailto:sales@centres.com)

### ASIA

Thailand  
Tel: +66-2-326-0812  
Customer Service: [info@destaco.com](mailto:info@destaco.com)

China  
Tel: +86-21-6081-2888  
Customer Service: [china@destaco.com](mailto:china@destaco.com)

India  
Tel: +91-80-41123421-426  
Customer Service: [india@destaco.com](mailto:india@destaco.com)

### EUROPE

Germany  
Tel: +49-6171-705-0  
Customer Service: [europe@destaco.com](mailto:europe@destaco.com)

France  
Tel: +33-4-73545001  
Customer Service: [france@destaco.com](mailto:france@destaco.com)

Great Britain  
Tel: +44-1902-797980  
Customer Service: [uk@destaco.com](mailto:uk@destaco.com)

Spain  
Tel: +34-936361680  
Customer Service: [spain@destaco.com](mailto:spain@destaco.com)

Netherlands  
Tel: +31-297285332  
Customer Service: [benelux@destaco.com](mailto:benelux@destaco.com)

**CLICK OR SCAN**

for the latest  
PDF version of  
this document.

